

AMOY Working Group Meeting Logistics

Facility: Epworth by the Sea (<https://www.epworthbythesea.org/>)

This is a conference and retreat center overlooking the marsh and river on the west side of St Simons Island. It is a close walk to a county park (Gascoigne Bluff <https://www.goldenisples.com/listing/gascoigne-bluff/154/>)

Our lodging and meeting room will be in the same building (D. Abbott Turner Lodge & Pioneer Meeting Room). As you enter the facility from the main gate, registration and dining room will be on your left at the first major intersection. To reach the meeting/lodging building – proceed straight through the first intersection, and then turn right at the end of the road and it will be the last building on your left (See map – both registration & meeting/lodging areas are circled).

Meals:

Monday dinner 5:30 – 7:00

Tuesday Breakfast 7:00-8:00

Tuesday Lunch 12:00-1:00

Tuesday Dinner – Low Country Boil at Altama WMA (See details below)

Wednesday Breakfast 7:00-8:00

Wednesday Lunch 12:00-1:00

Wednesday Dinner 6:00-7:00

Firepit beside Lodge 7:00

Optional evening trip to St Simons Island Village, or Jekyll Island Historic district

Thursday Breakfast 6:00-7:00 (field trip early departure)

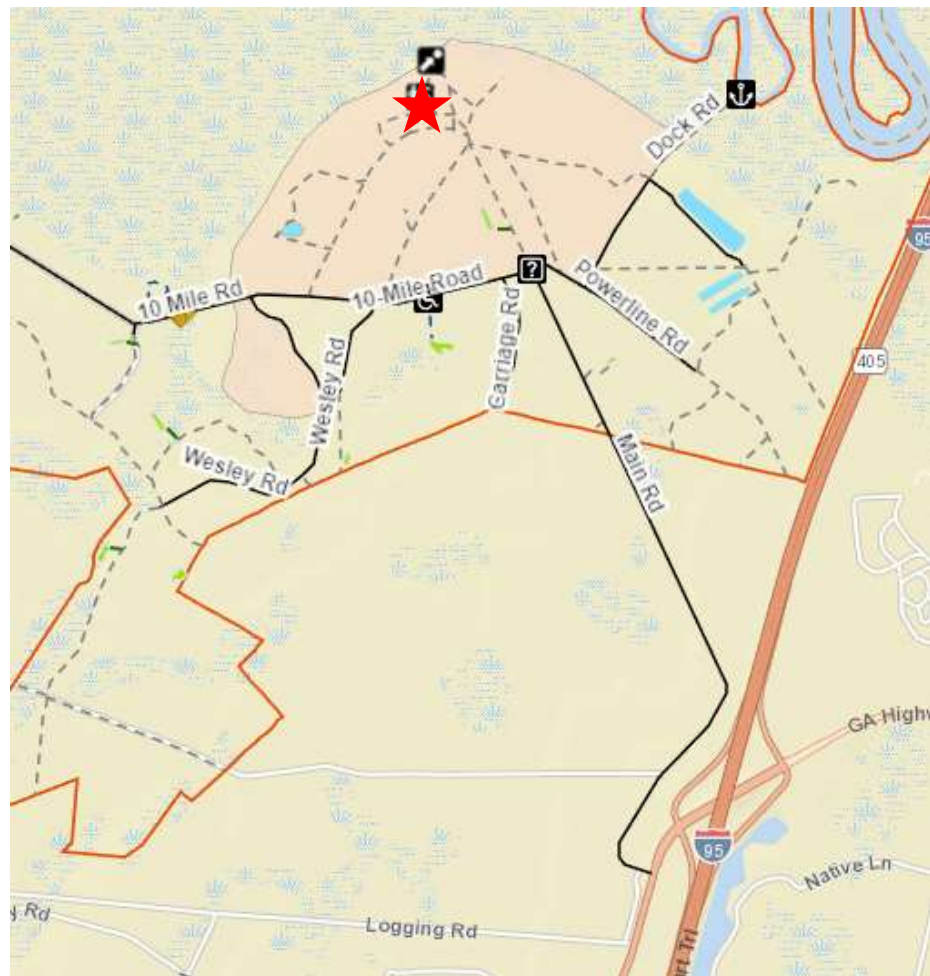
Low Country Boil: Altama WMA – following meeting on Tuesday Dec 6th

(<https://georgiawildlife.com/altama-plantation-wma>)

DNR van shuttle can take many folks – others can carpool. The location is approximately 25-minute drive from Epworth.

Directions:

- Leaving Epworth – Turn Right onto Sea Island Road for 0.1 miles.
- Stay in the right lane and merge onto Demere in order to get to the Torras Causeway leaving St Simons Island
- Follow Torras Casueway for 4.1 miles
- Turn right onto Hwy 17 North for 11.1 miles
- Turn left on Hwy 99 (signs for Interstate I-95)
- Cross the Interstate and take Right at sign for Altama WMA
- Proceed straight until you come to a gate with keypad.
- Press 5258# for gate
- Proceed straight and dinner will be in large building at top of hill on left.



Thursday Field Trip: Morning on the Altamaha River

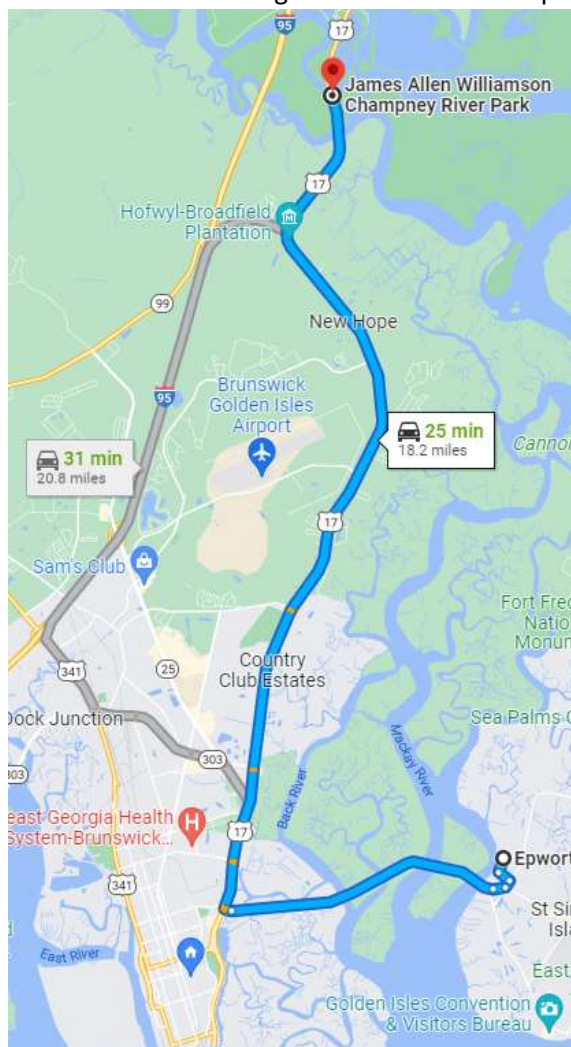
Bring warm cloths, water and a snack. We should be back for lunch.

Depart Epworth 6:30 after early breakfast

Depart Champney Boat Ramp 7:15

Directions to Champney Boat ramp

- Leaving Epworth – Turn Right onto Sea Island Road for 0.1 miles.
- Stay in the right lane and merge onto Demere in order to get to the Torras Causeway leaving St Simons Island
- Follow Torras Casueway for 4.1 miles
- Turn right onto Hwy 17 North for 13.4 miles. Cross bridge over South Altamaha River and make next right turn into boat ramp



Local Attractions of the Golden Isles:

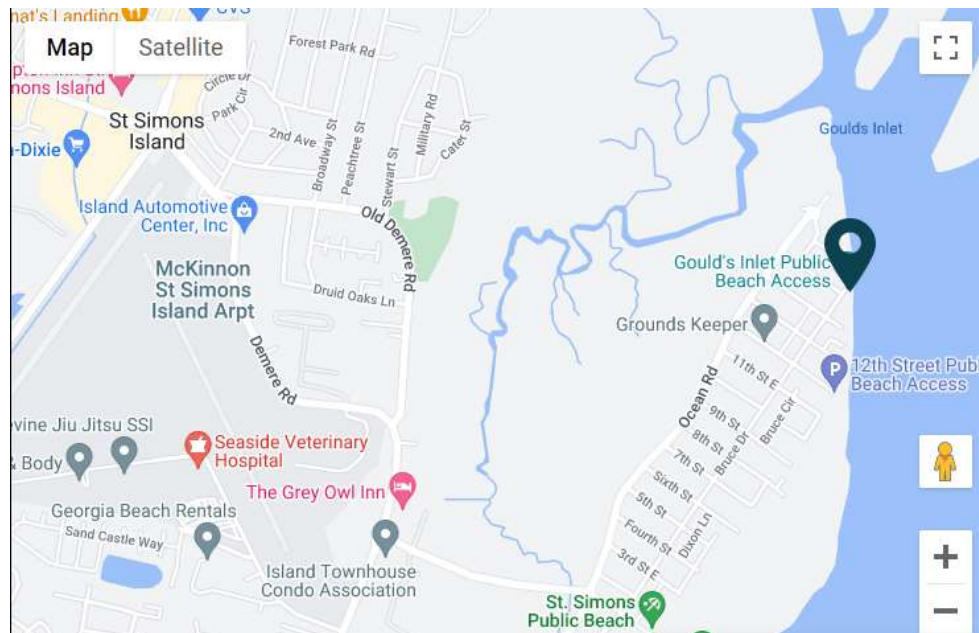
This part of the Georgia Coast is named the Golden Isles (<https://www.goldenises.com/about-us/visitor-information-centers/>) for the color of the marsh. There are many opportunities for outdoor recreation and exploration as well as a rich history dating back 12,000 years.

Fort Frederica (<https://www.nps.gov/fofr/index.htm>) is a National Monument on the north end of St Simons Island highlights the remains of a village and fort dating to the early mid 1700's.

Cannon's Point (<https://www.sslt.org/protected-properties-2/cannons-point-preserve/>) Managed by the St Simons Land Trust this 644 acre natural area has trails, kayak launch and bird observation towers.

Jekyll Island State Park. Jekyll Island is a publicly accessible island with 9 miles of beach, many miles of walking/biking trails, a beautiful historic district and the Sea Turtle Center (<https://www.jekyllisland.com/activities/georgia-sea-turtle-center/>), a rehab hospital and museum for sea turtles.

Closest Shore-birding Beach – Gould's Inlet. 15th Street, Bruce Drive. St Simons Island



The Village on St Simons Island. (<https://www.exploregeorgia.org/st-simons-island/shopping/art-antiques/st-simons-island-pier-village>)

Fishing Pier, shops, historic light house, restaurants etc...

