

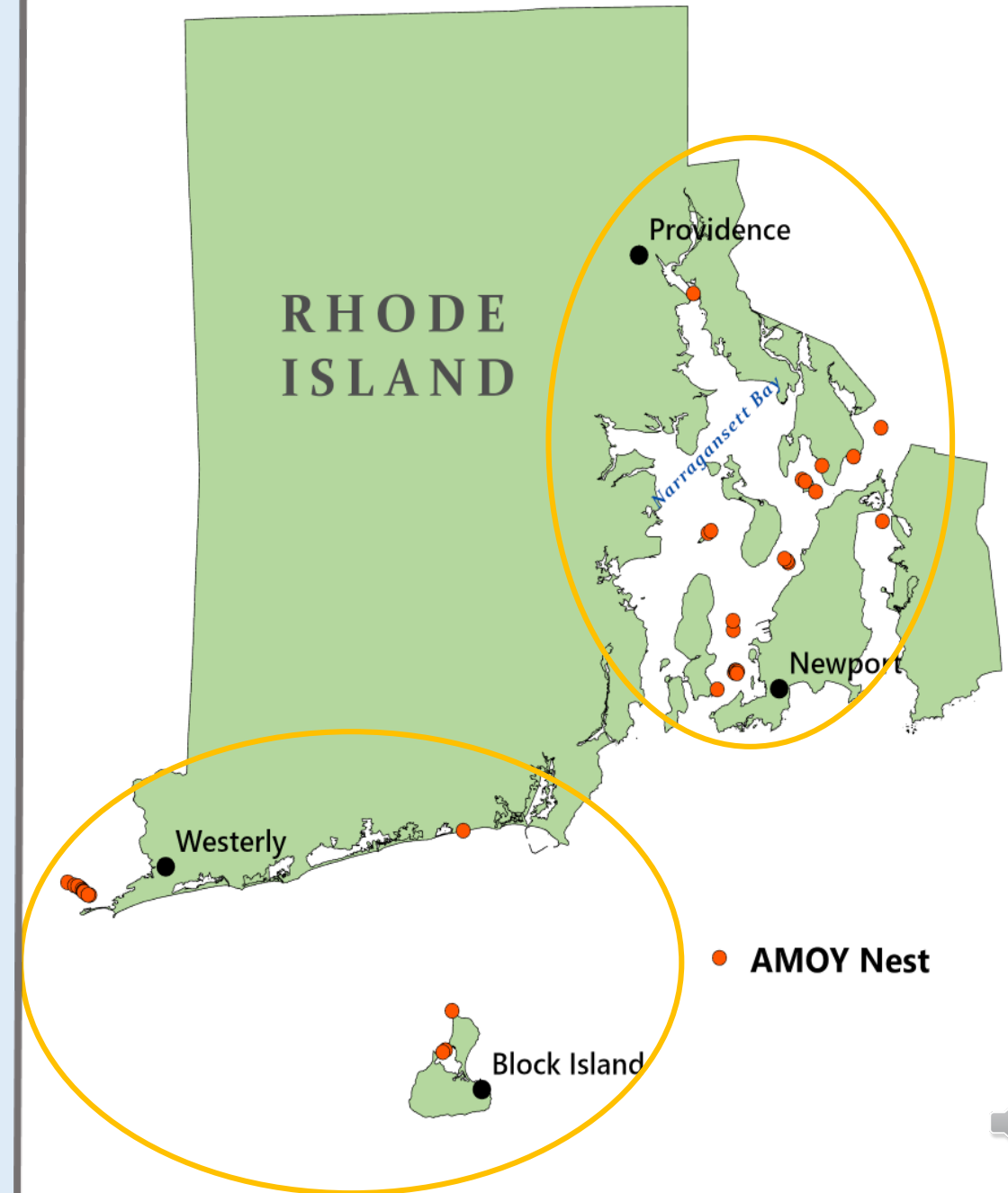
Rhode Island American Oystercatcher State Update 2020

Maureen Durkin, USFWS



Distribution

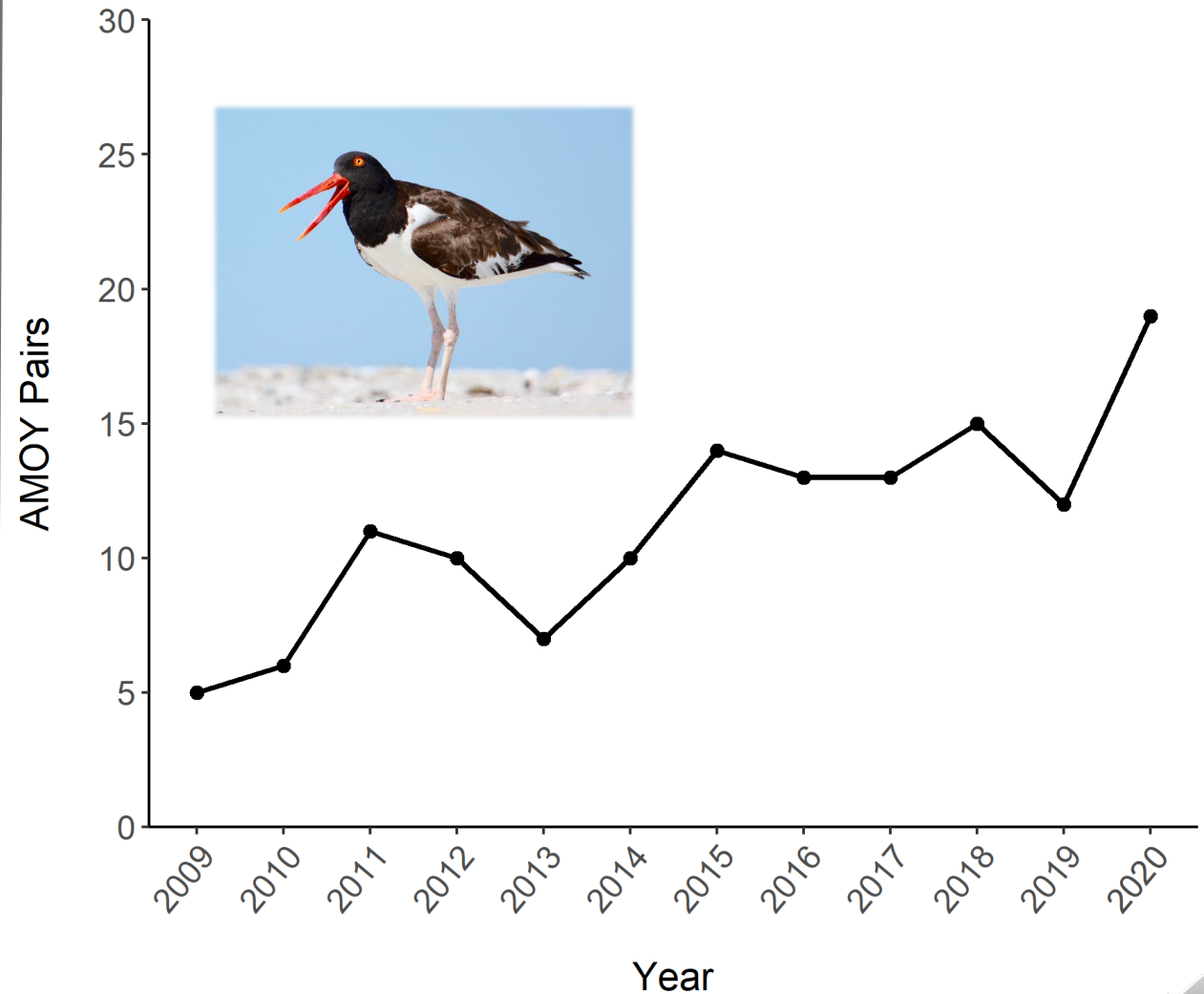
- USFWS RI National Wildlife Refuge monitors south county and Block Island pairs
 - Abundance and productivity
 - Most on busy beaches/sites- posting and roping
- RIDEM counts pairs in Narragansett Bay 1x per season as part of waterbird census
 - Abundance only
 - Mostly small rocky islands



2020 Abundance

- 43 pairs in Rhode Island
 - 17 in South County (USFWS)
 - 26 in Narragansett Bay (DEM)
- Statewide data incomplete past several years, but RI numbers overall increasing.
- South County population has been steadily increasing, mostly driven by Sandy Point Island.
 - Largest nesting site in state (14 pairs)

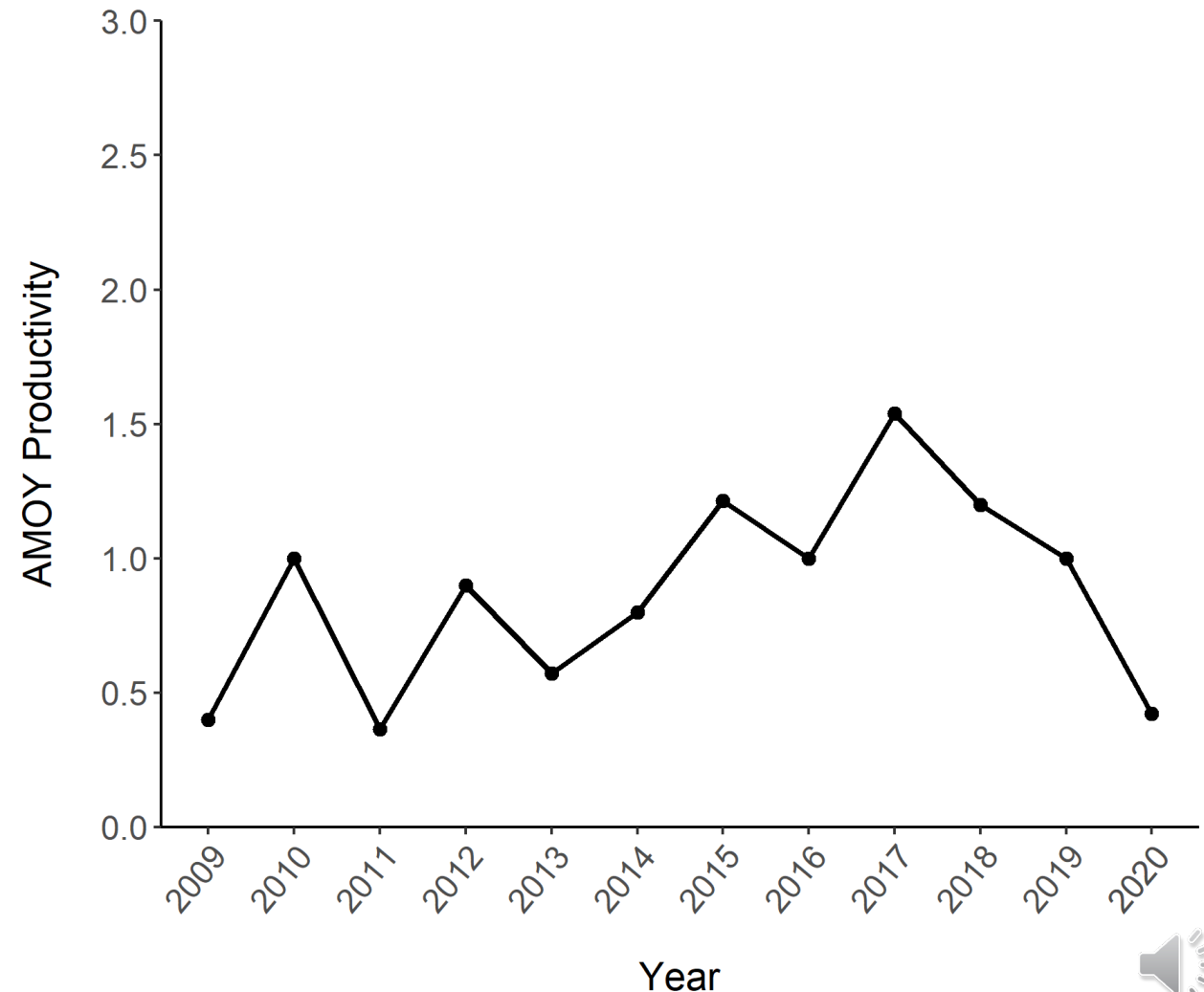
USFWS Monitored Sites In Rhode Island



2020 Productivity

- For 17 USFWS-monitored pairs:
 - 0.47 fledged chicks/pair
- Poor year after 4 years at or above 1.0 fledged chicks/pair
- Hatch rate= 0.26
- Fledge rate=0.44

USFWS Monitored Sites In Rhode Island



Challenges

- Mainland nests never successful (no record of fledge from any mainland site in past 12 years).
- Abandonment of mainland sites early season before laying
- Gull colony on Sandy Point Island appeared to account for high proportion of nest losses.
 - *Why was effect greater in 2020 after several years of high productivity despite gulls?*

