

Georgia American Oystercatcher work

Tim Keyes

GA DNR

Nongame Conservation Section



Vertical vs. Horizontal Bands



300 feet



250 feet



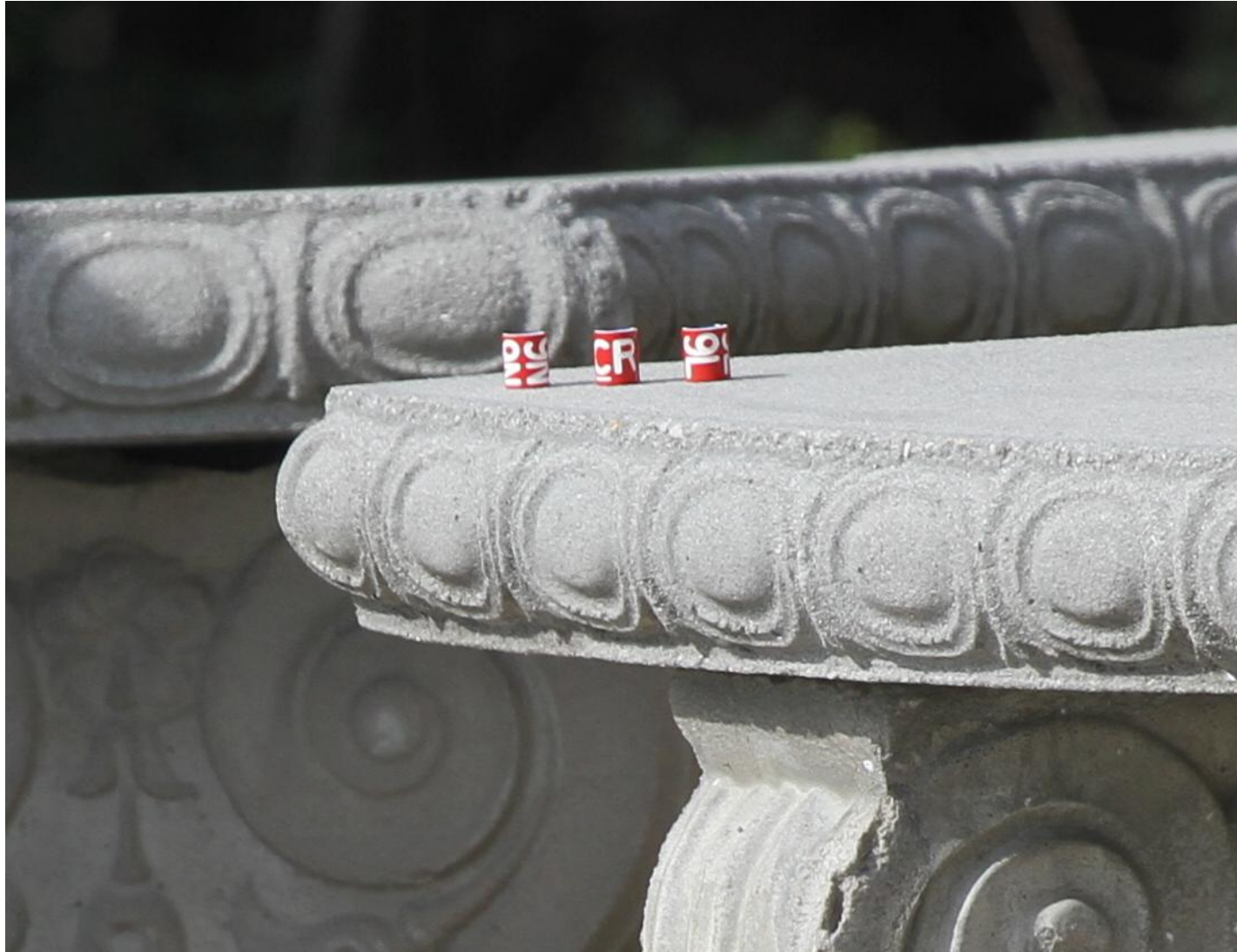
200 feet



150 feet



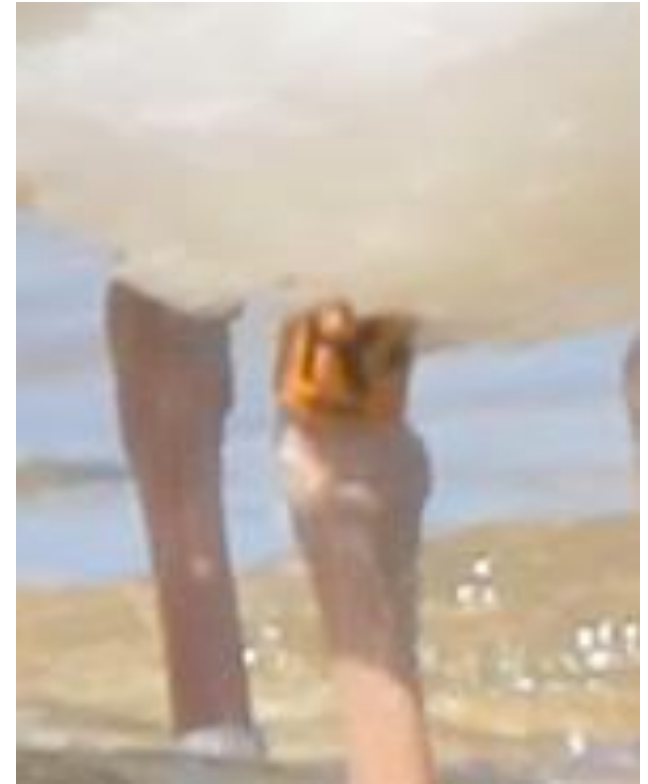
100 feet



Top of band obscured



Trade-offs





Re-sight Comparison

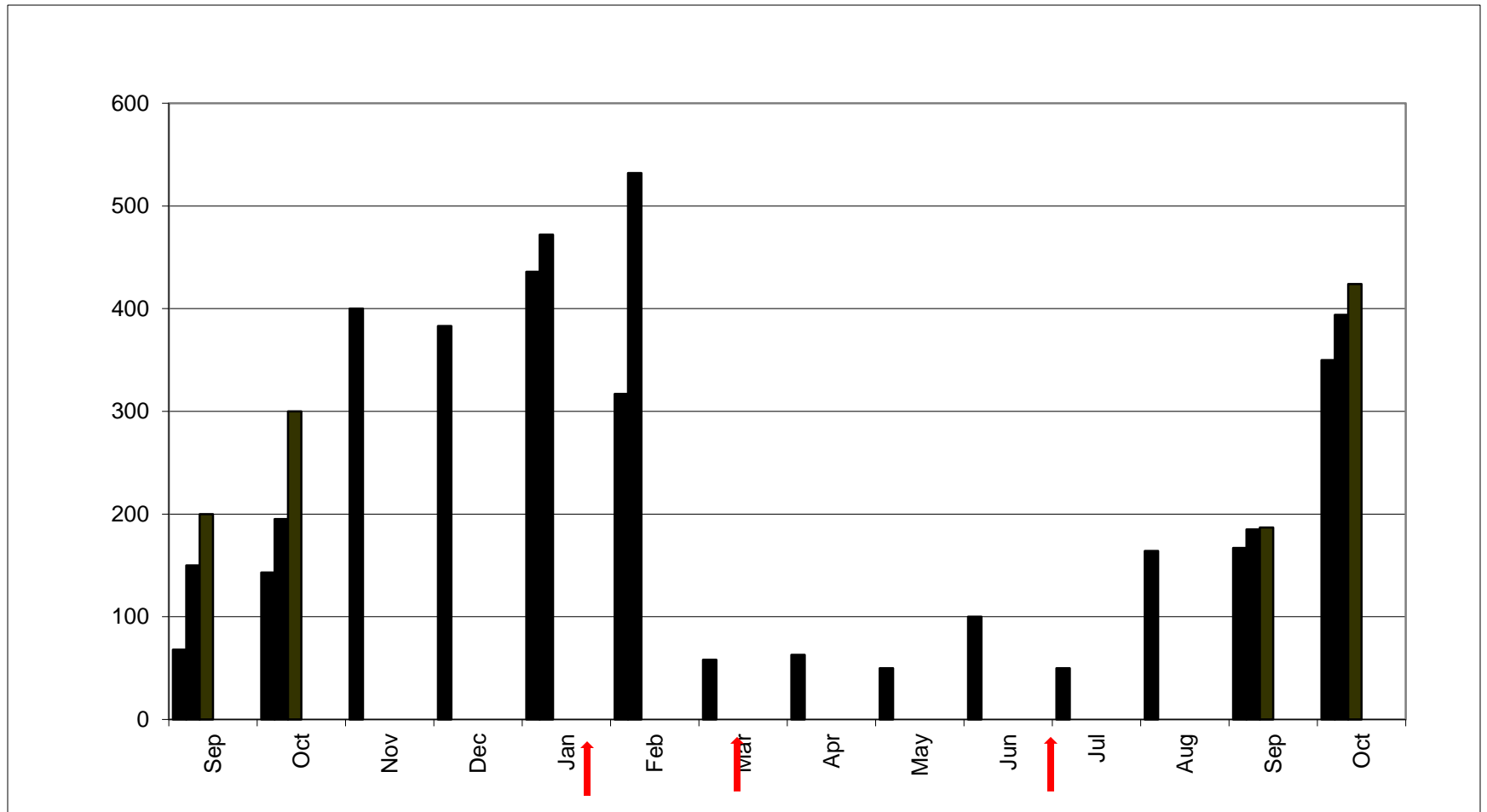
- Started dual alpha-numeric bands in 2004
 - Applied 188 horizontal (70%)
 - Applied 81 vertical (30%)
- Since last verticals applied (10/10), 1461 re-sights of these 269 birds
 - Re-sighted 1055 horizontal (72%)
 - Re-sighted 406 vertical (28%)
- Despite frustrating viewing – don't appear to be re-sighting fewer birds.
- Concern over public miss-reading
 - 43 of 2794 re-sight records this year were public reports

A Year on the Altamaha

- NRDA
- REKN band re-sighting
- 50+ trips to river mouth
 - Manomet, USFWS, AAS, LSSI, volunteers
- 2,500 AMOY band re-sights between September 2010 and October 2011

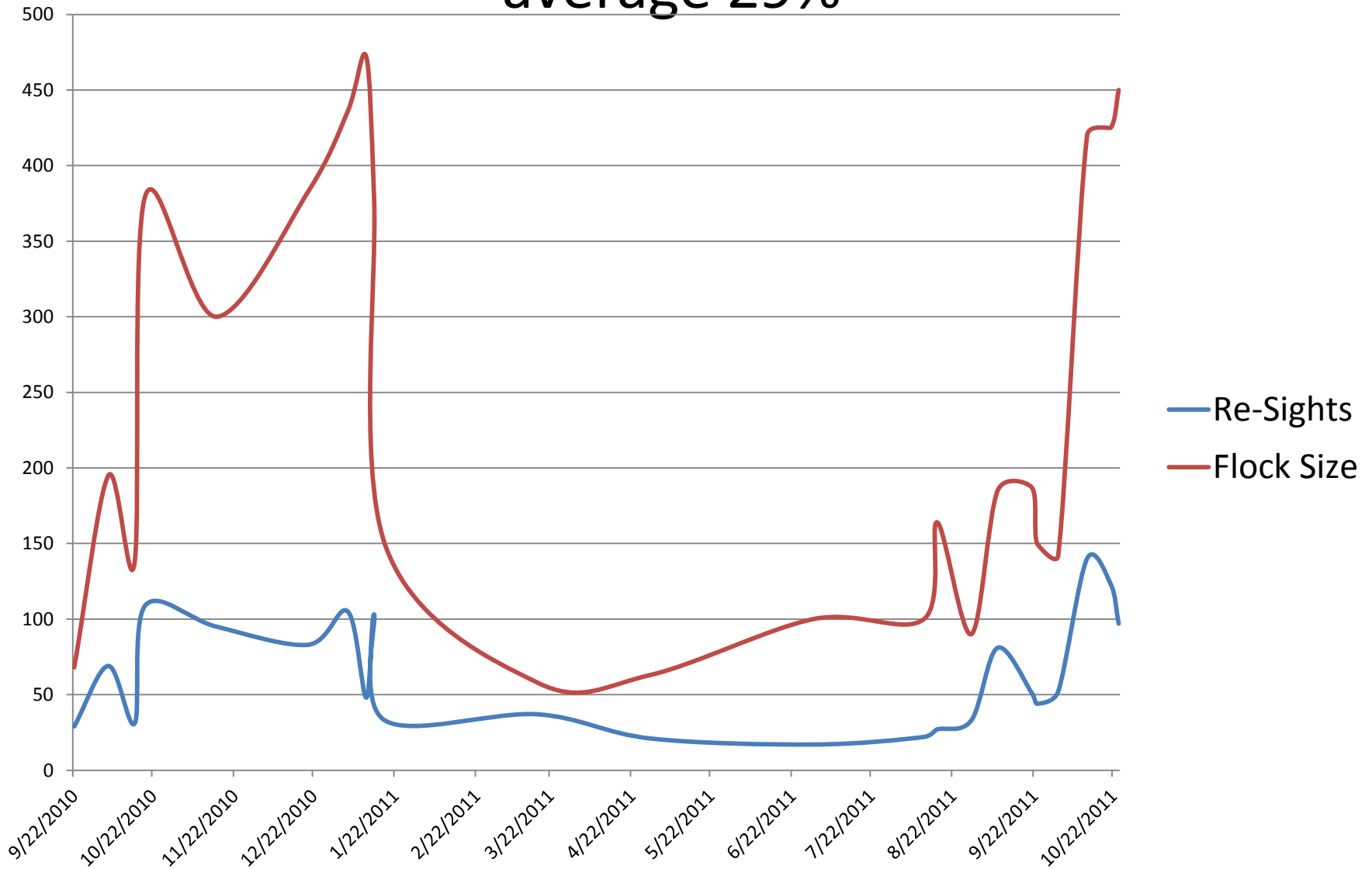
Non-breeding AMOY in Altamaha

Sep'10 – Oct '11



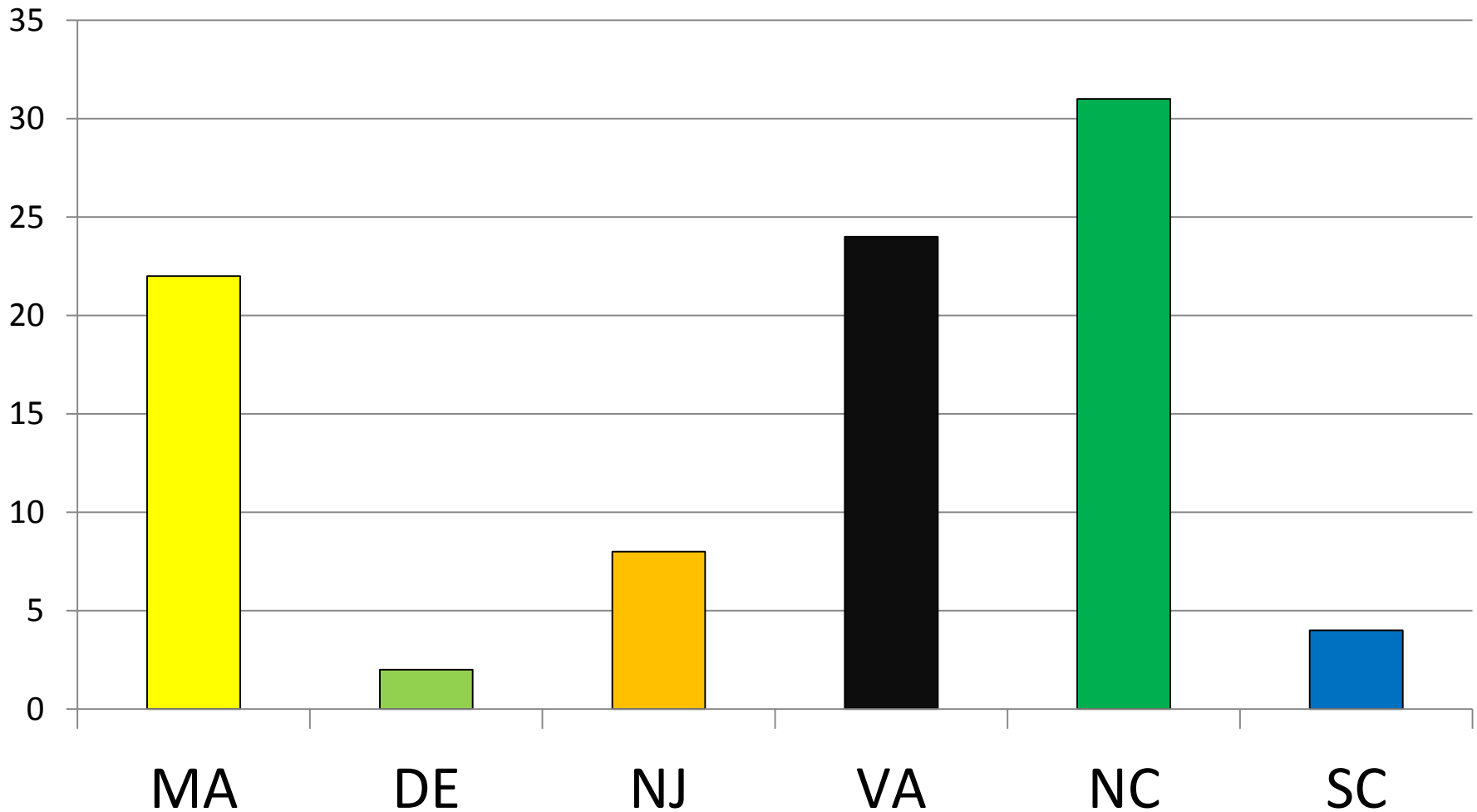
Band ratios

average 29%



Out of State band records

(91 birds between September 2010 through October 2011)



233 Georgia Banded birds re-sighted

Further work

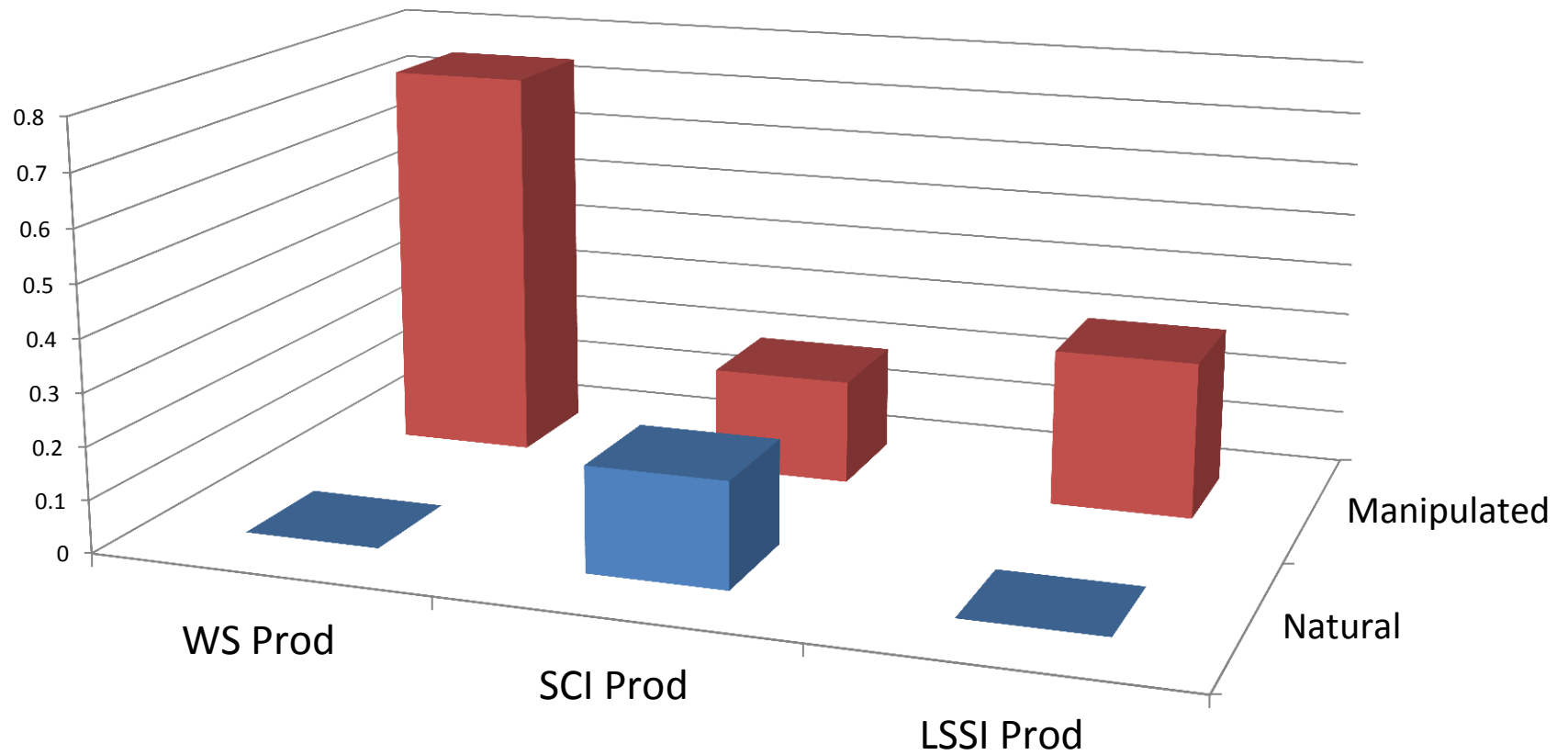
- Model annual use of Altamaha
 - Total usage, arrival, departure and duration
- Tie to natural resource abundance (*Mulinia lateralis*)
- Banded chick survival
- General migration paths and timing
- Detection probability

Alleviating predator and tidal stress on AMOY (SCI and LSSI)

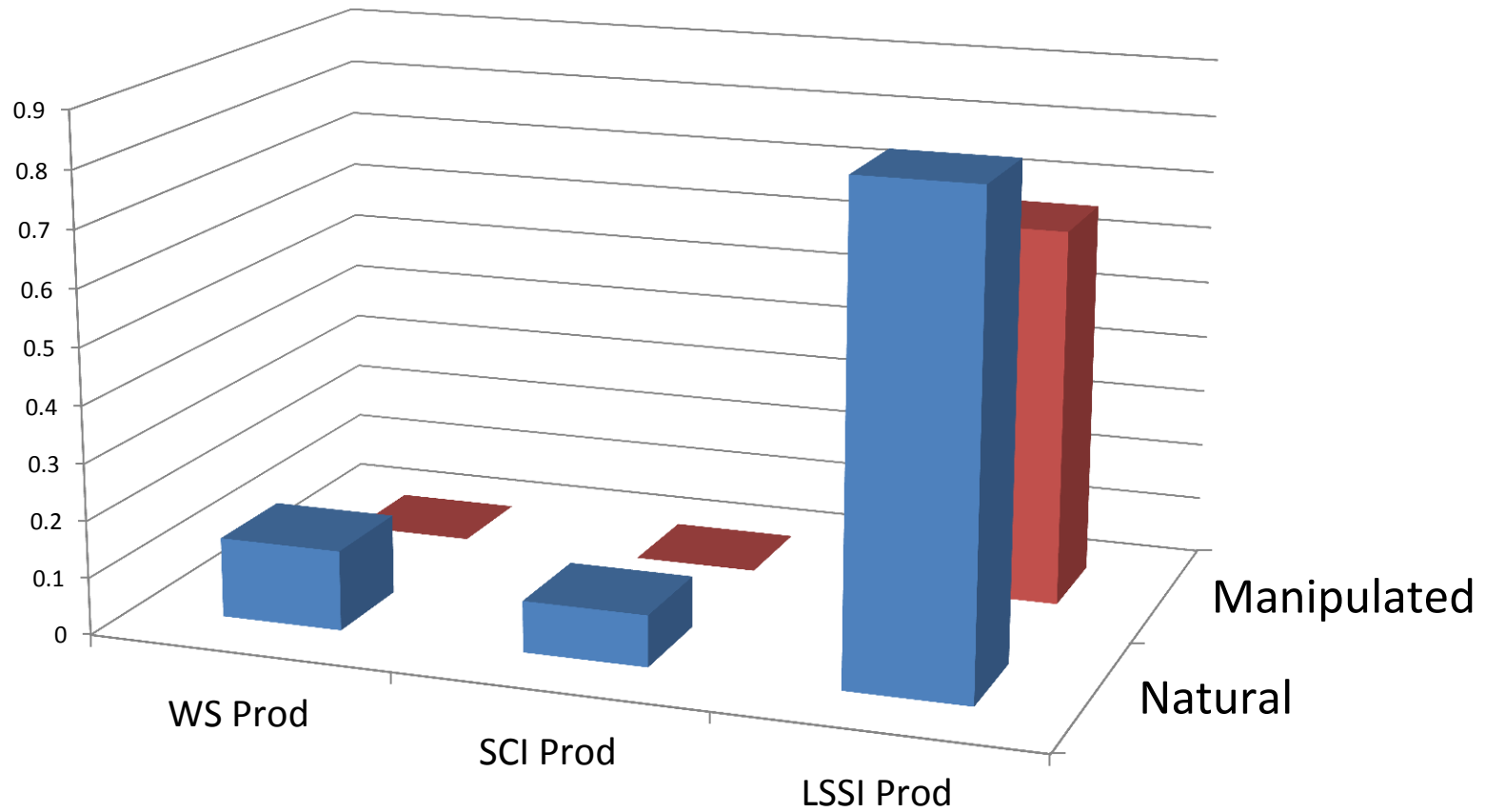
- Problem:
 - Low productivity
 - High vulnerability to predators and over wash during egg stage
 - Logistically difficult environments to trap predators
- Possible Solution
 - Collect and incubate eggs
 - replace with dummy eggs
 - Return to nest when pipping or w/in 24 hours of hatching



2010 Productivity



2011 Productivity



Results after 2 of 3 seasons

- High Variability between sites and years
- Some sites/years have enough predation that incubating eggs doesn't help
 - Visual sighting of predators on 2011
 - Dummy eggs chewed
- High expense, effort and level of intrusion

Project benefits

- Detailed productivity data for 50% of GA's AMOY
- Public education
- Better understanding of threats
- Understanding of return on investments of egg incubating program
- Adult attendance in different habitats

Aerial Winter Roost Survey

2002 – 1188

2005 – 478

2011 - 759



Feb 8, 2001, 532 AMOY



Mid-winter shorebird survey

Year	AMOY Count
1997	378
1998	ND
1999	363
2000	ND
2001	487
2002	463
2003	310
2004	500
2005	545
2006	568
2007	505
2008	441
2009	383
2010	197
2011	641

- All GA beaches during one Hi-tide cycle in January
- Average 444