

Monitoring of American Oystercatchers in North Carolina during Breeding & Winter Seasons

Sara Schweitzer
NC Wildlife Resources Commission



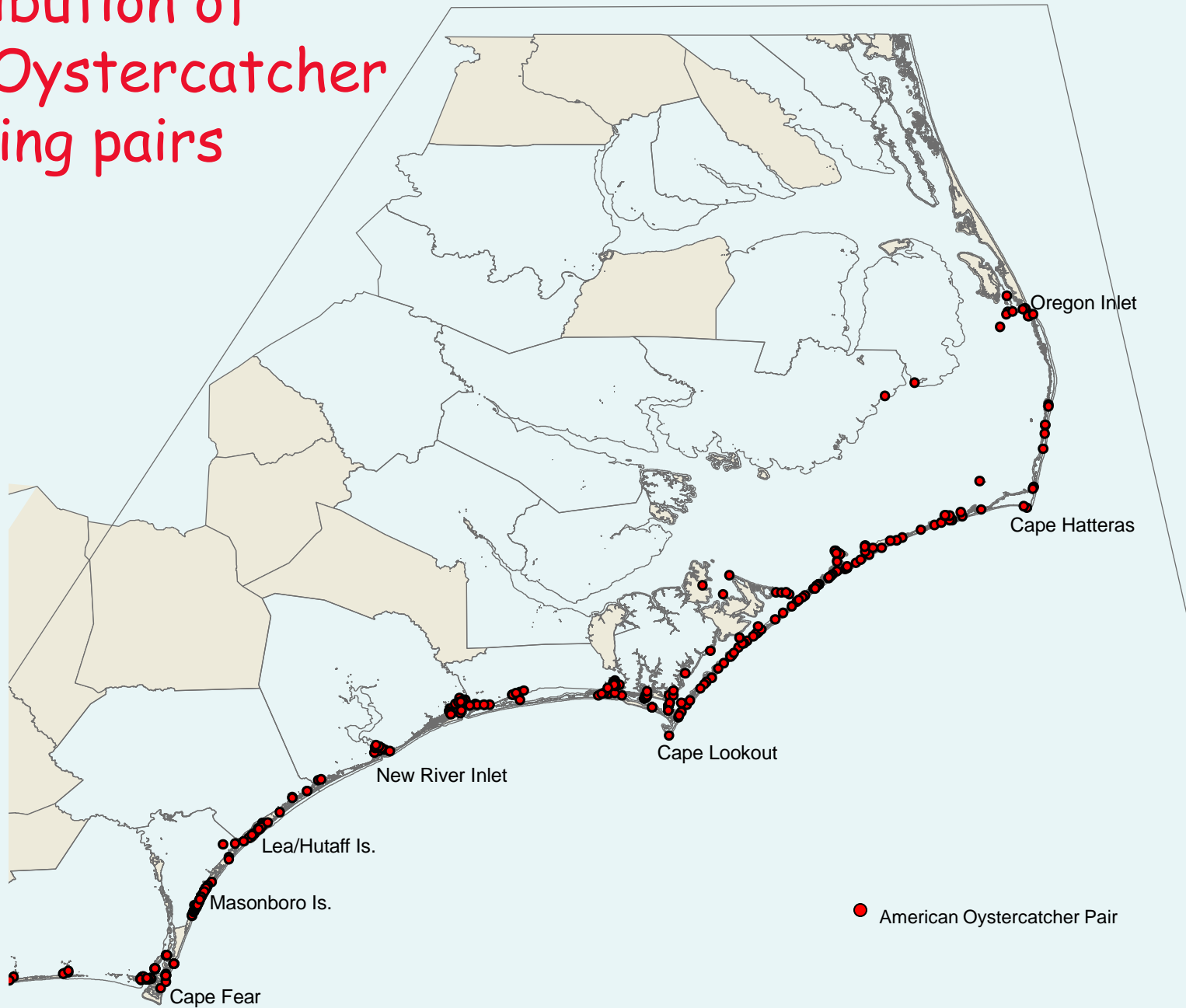
AMOY WG meeting, Wellfleet, MA, Oct. 2010

Overview

- State listed as species of special concern
- Coast-wide abundance & distribution data collected: 2004, 2007, 2011
- Biologists with NCSU, Cape Lookout NS, & Cape Hatteras NS have been monitoring oystercatchers on barrier island beaches since late 1990s
- Current studies: responses of AMOY reproductive rates to predator management, & reductions in disturbance from people (degrees of beach closures); resighting & distribution during migration; winter numbers & distribution [NCWRC, NPS, NC Audubon, NCSU]



Distribution of American Oystercatcher nesting pairs



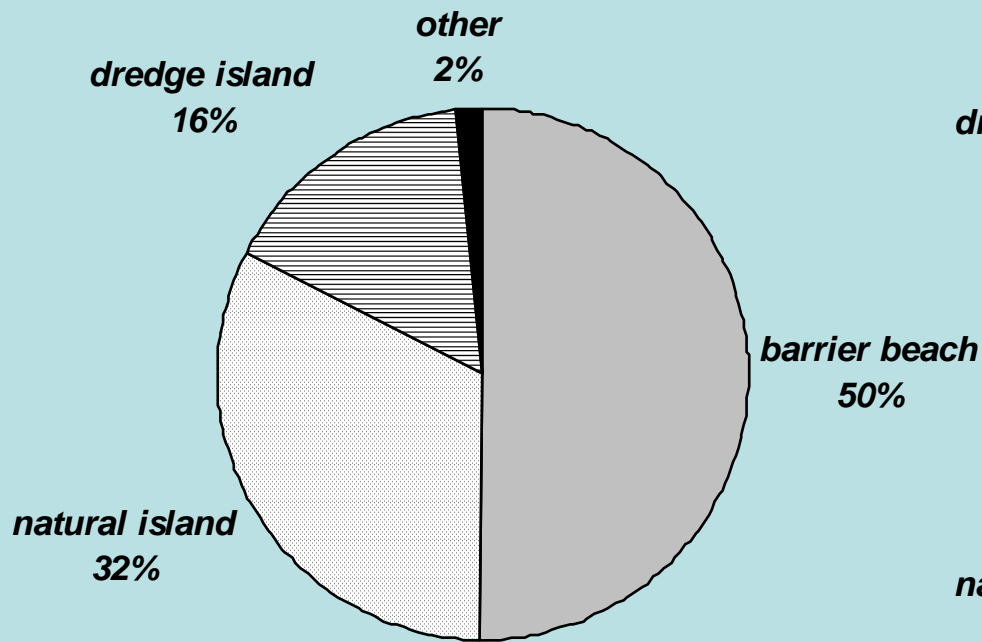
2004 Distribution of American Oystercatchers by Nesting Habitat in NC Counties

County	Barrier Island Beach	Natural Estuarine Island			Dredged Material Island	Other	Total
		<i>Sand Beach</i>	<i>Shell Rake</i>	<i>Wrack</i>			
Brunswick	12	18	4	0	16	3	53
New Hanover	52	3	0	0	6	0	61
Pender	14	3	5	0	0	0	22
Onslow	0	8	7	0	3	0	18
Carteret	53	33	11	13	11	2	123
Hyde	14	1	0	0	0	0	15
Dare	20	3	0	0	12	0	35
Total	165 (50%)	69 (21%)	27 (8%)	13 (4%)	48 (15%)	5 (2%)	327

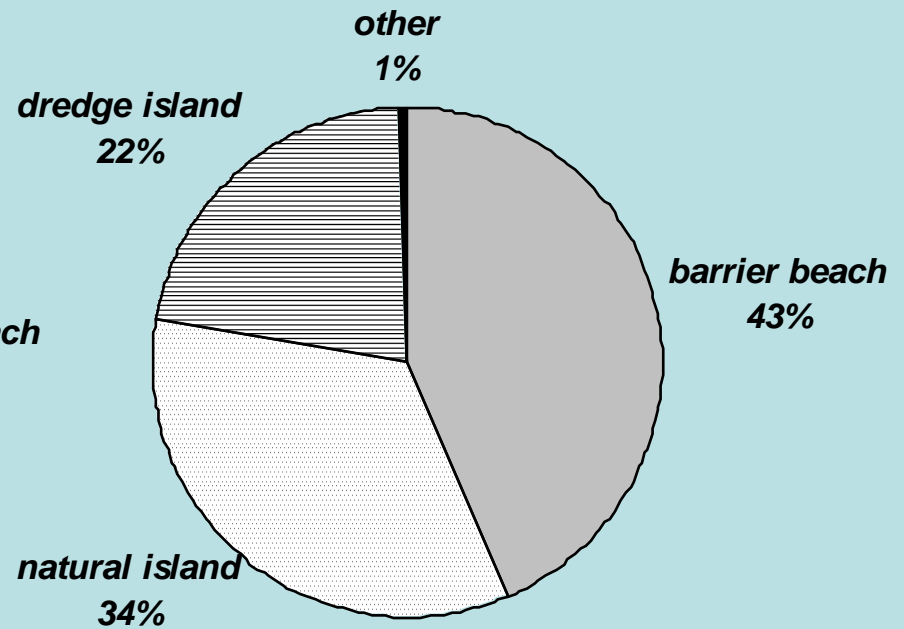
2007 total number of nesting pairs was 339

Distribution by Habitat

2004



2007



Marsh & beach island nests Near Bogue Inlet



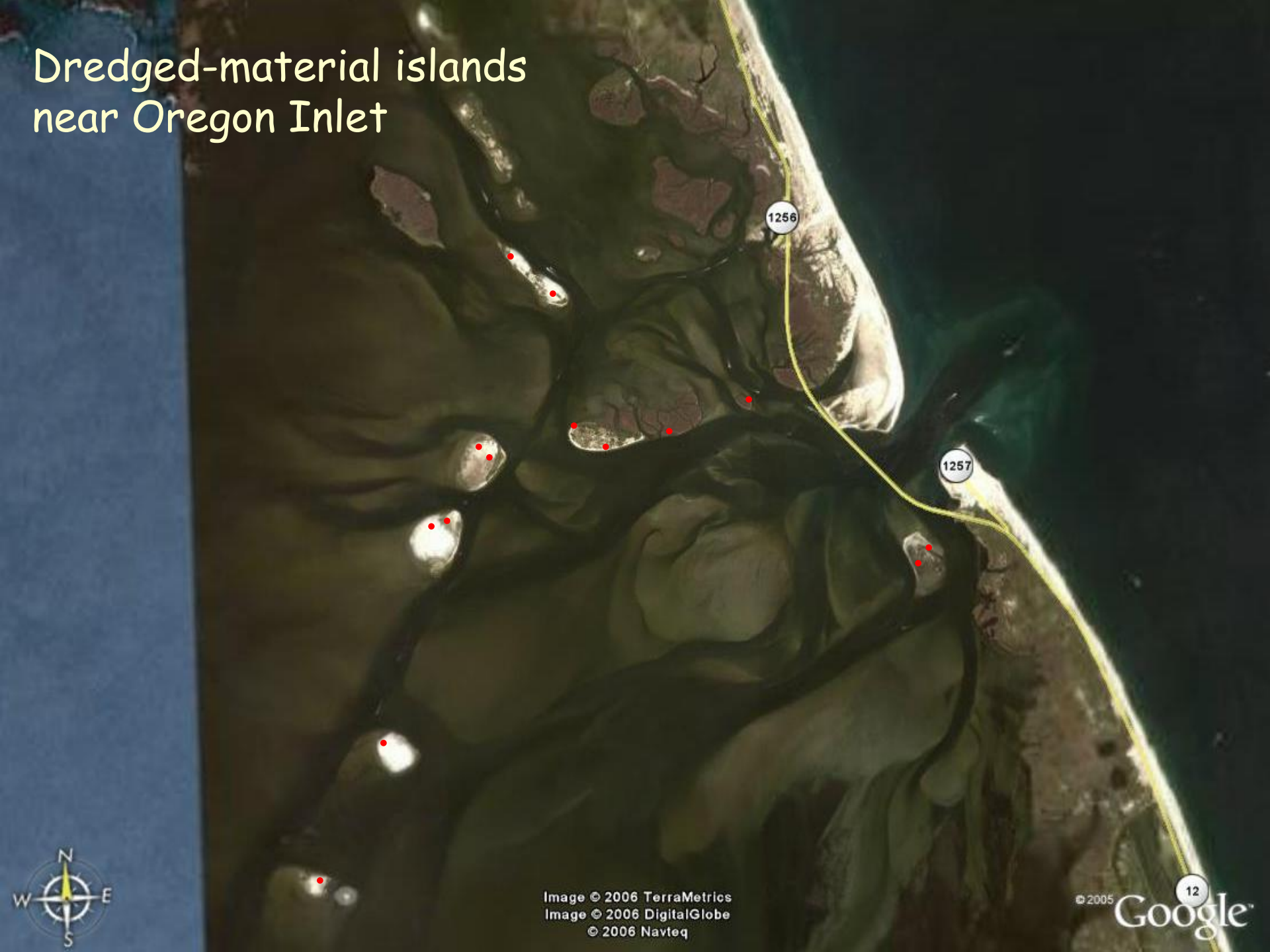
AIWW

Bogue Inlet

Image © 2006 DigitalGlobe
© 2006 Navteq

© 2005 Google

Dredged-material islands near Oregon Inlet



Parnell Island (dredged-material island) near Oregon Inlet



Sidney Maddock



Sidney Maddock

22 state-owned & managed islands; NC Audubon assists greatly with management

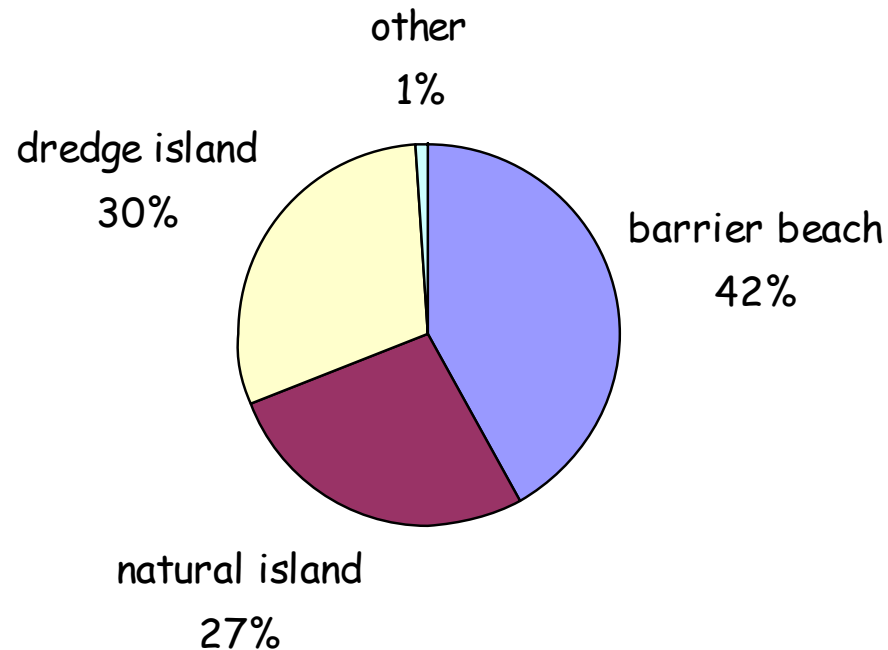
2010 Distribution of American Oystercatchers by Nesting Habitat in NC Counties¹

County	Barrier Island Beach	Natural Estuarine Island			Dredged Material Island	Other	Total
		<i>Sand Beach</i>	<i>Shell Rake</i>	<i>Marsh</i>			
Brunswick	5	3	4	0	40	0	52
New Hanover	46	0	0	0	13	0	59
Pender	17	0	0	0	3	0	20
Onslow	4	10	21	6	3	0	44
Carteret	62	16	11	18	20	5	132
Hyde	4	1	1	0	17	0	23
Dare	17	5	0	3	14	0	39
Total	155 (42%)	35 (10%)	37 (10%)	27 (7%)	110 (30%)	5 (1%)	369

¹Data are preliminary and minor corrections may be necessary

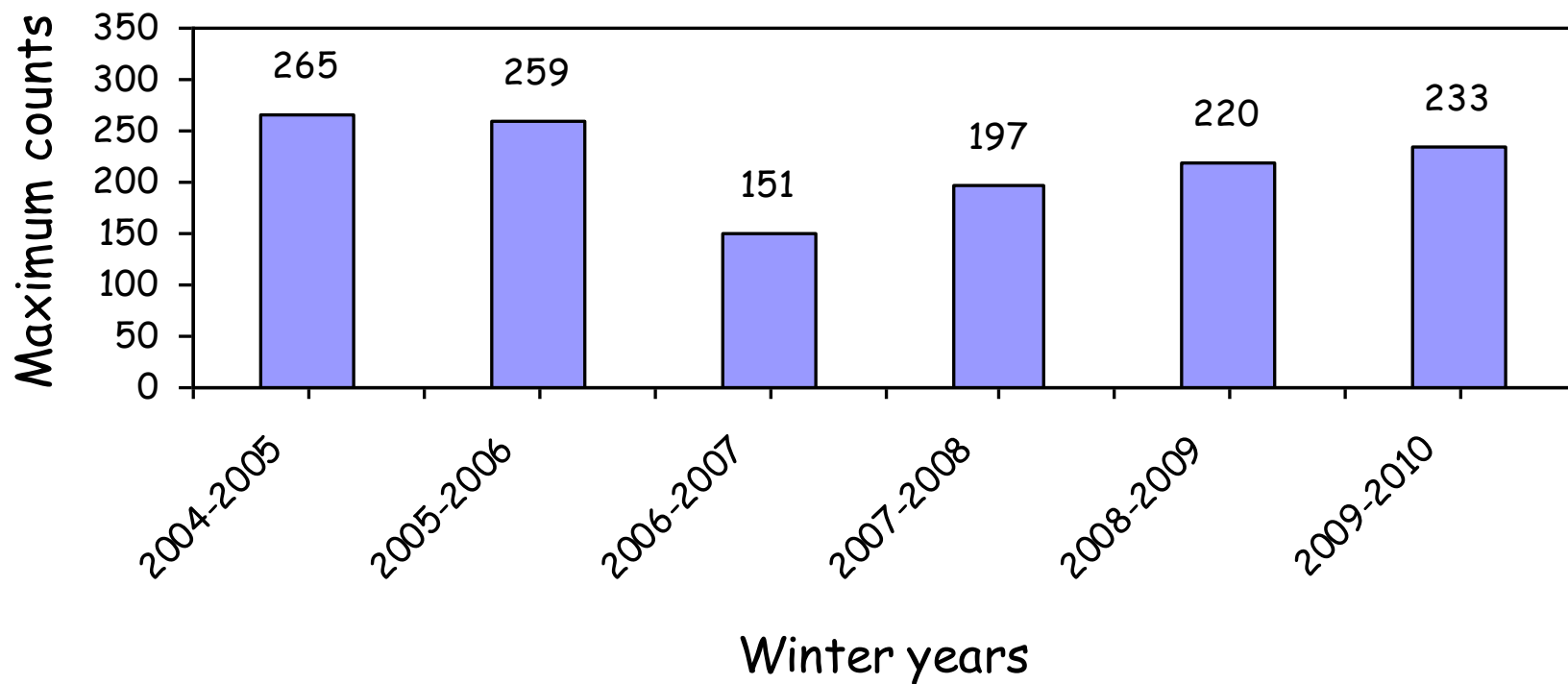
Distribution by Habitat

2010



Winter Surveys

Maximum Counts of Wintering American Oystercatchers





Phillips Island

Phillips

Beaufort

Beaufort, NC

Pivers Island

Radio Island

nd

Along west end
Taylors Creek

Horse Island

See next
slide

Carrot Island

Simons Island

Porters Island

Gull Island

Davis
Bay Pt

Bottle
Run Pt

Sam Winter

Data SIO, NOAA, U.S. Navy, NGA, GEBCO
© 2010 Google
Image © 2010 DigitalGlobe
© 2010 Europa Technologies

©2010 Google

Imagery Dates: Jan 6, 2003 - Dec 9, 2006 34°41'56.64" N 76°38'24.12" W elev -1 ft

Eye alt 29291 ft



Questions?



Thanks!

Emily Rice
Dave Allen
Katie Snipes

