



NEW YORK CITY AUDUBON
CELEBRATING 30 YEARS OF CONSERVATION

American Oystercatcher in New York City 2011-2018



EMILIO TOBON

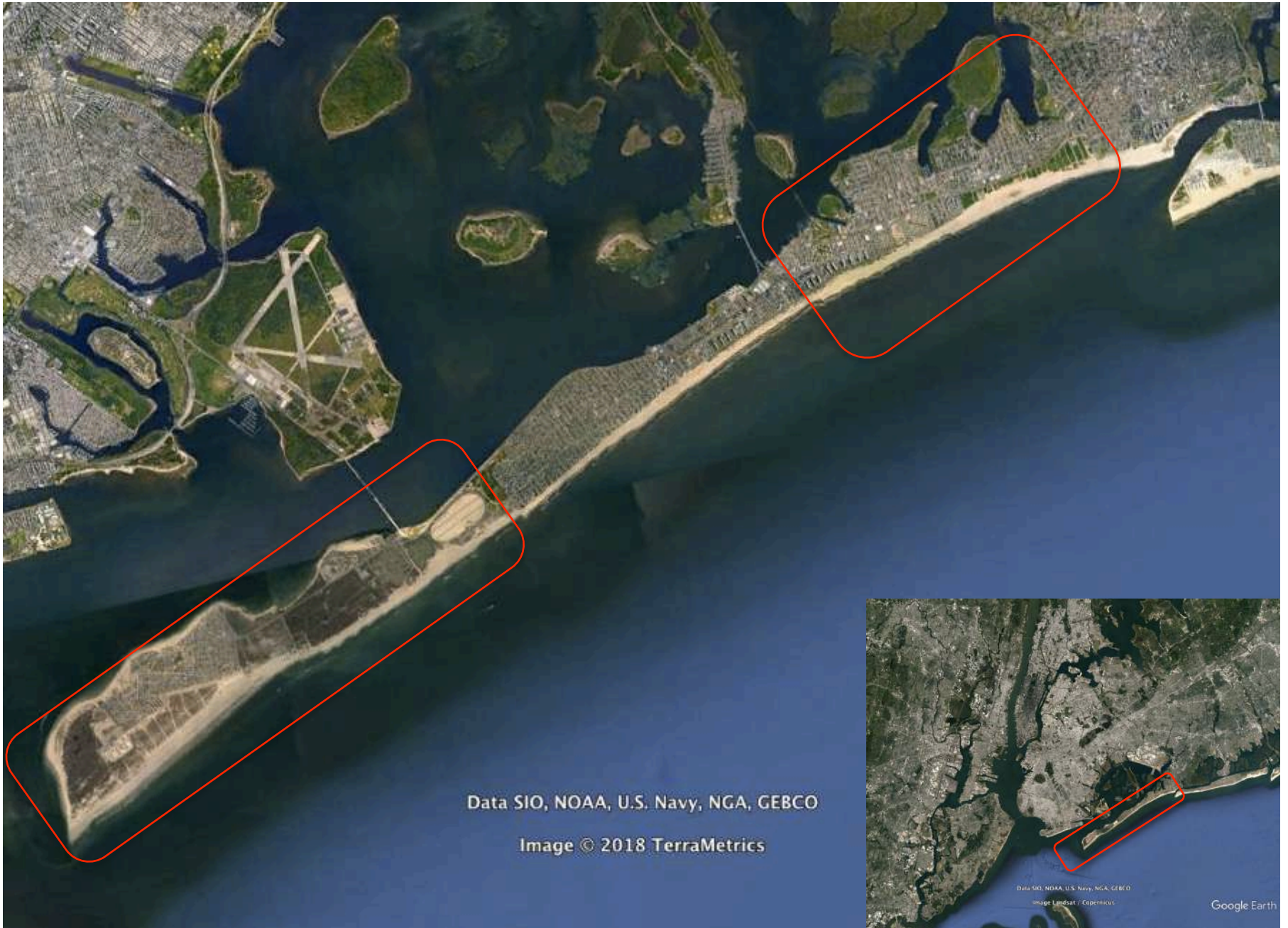
November 2018

INTRODUCTION

Surveys of New York City's nesting American Oystercatchers (*Haematopus palliatus*) began in 2011, when we started monitoring sites in Queens, NY. The focus of this presentation is NYC Audubon's work on the Breezy Point Peninsula: surveys and banding results.

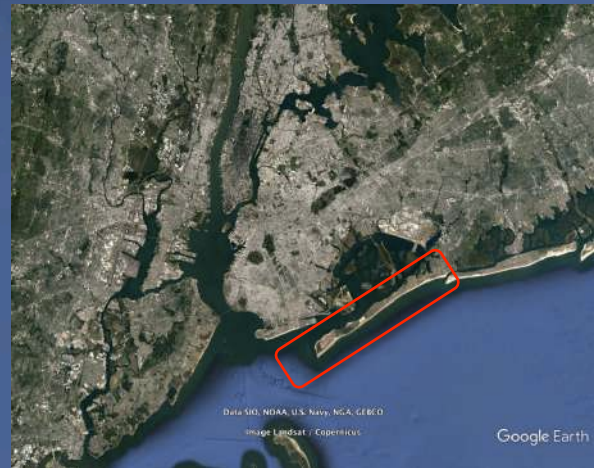


The surveys were conducted in Breezy Point, New York, NY from early May to mid August of each year, from 2011 to 2018, in an area that included Jacob Riis Park, Fort Tilden, West Beach, and Breezy Point Tip. The site was visited two times a week.



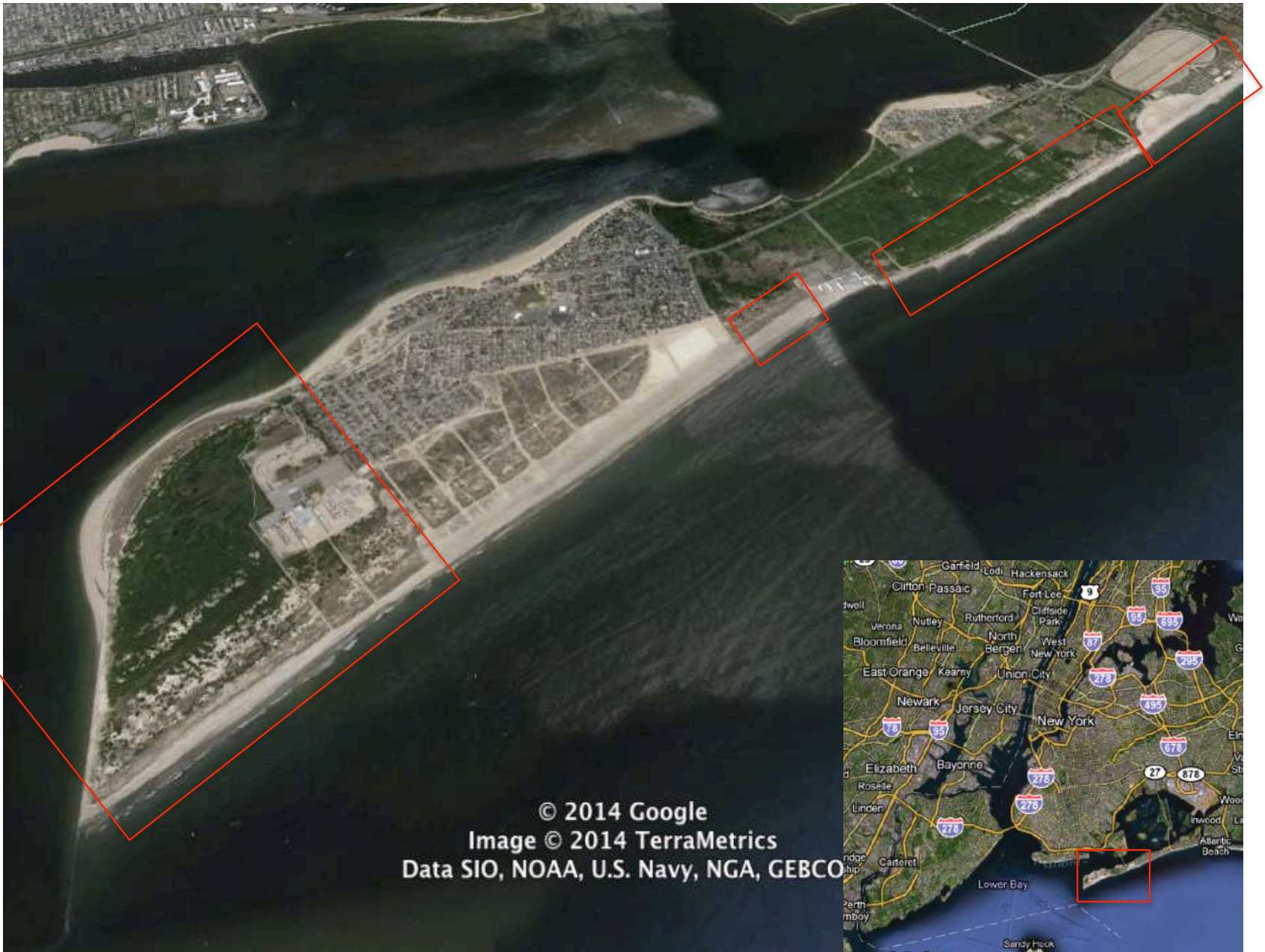
Data SIO, NOAA, U.S. Navy, NGA, GEBCO

Image © 2018 TerraMetrics



Data SIO, NOAA, U.S. Navy, NGA, GEBCO
Image Landsat / Copernicus

Google Earth



© 2014 Google
Image © 2014 TerraMetrics
Data SIO, NOAA, U.S. Navy, NGA, GEBCO

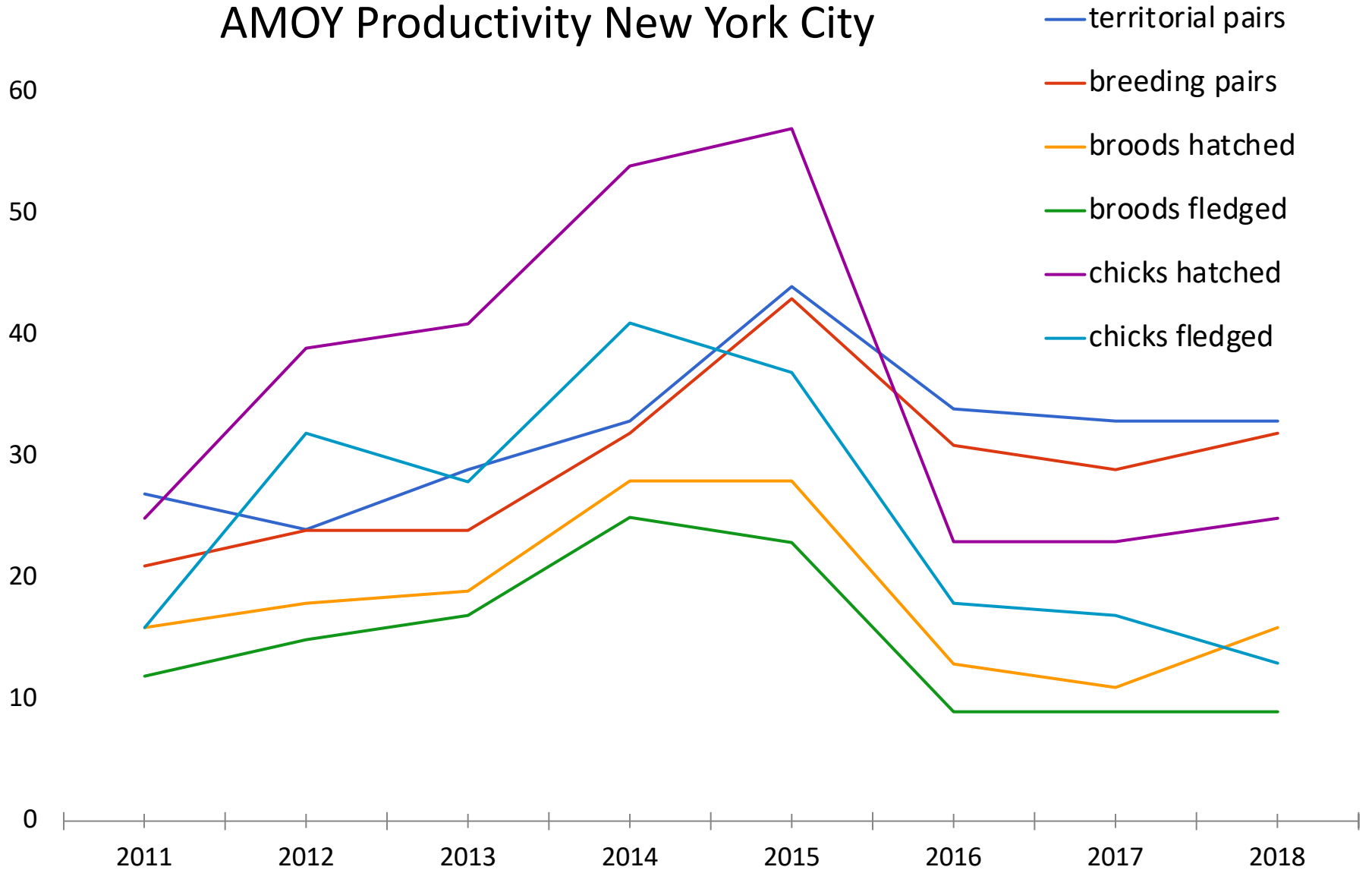


AMOY Productivity New York City

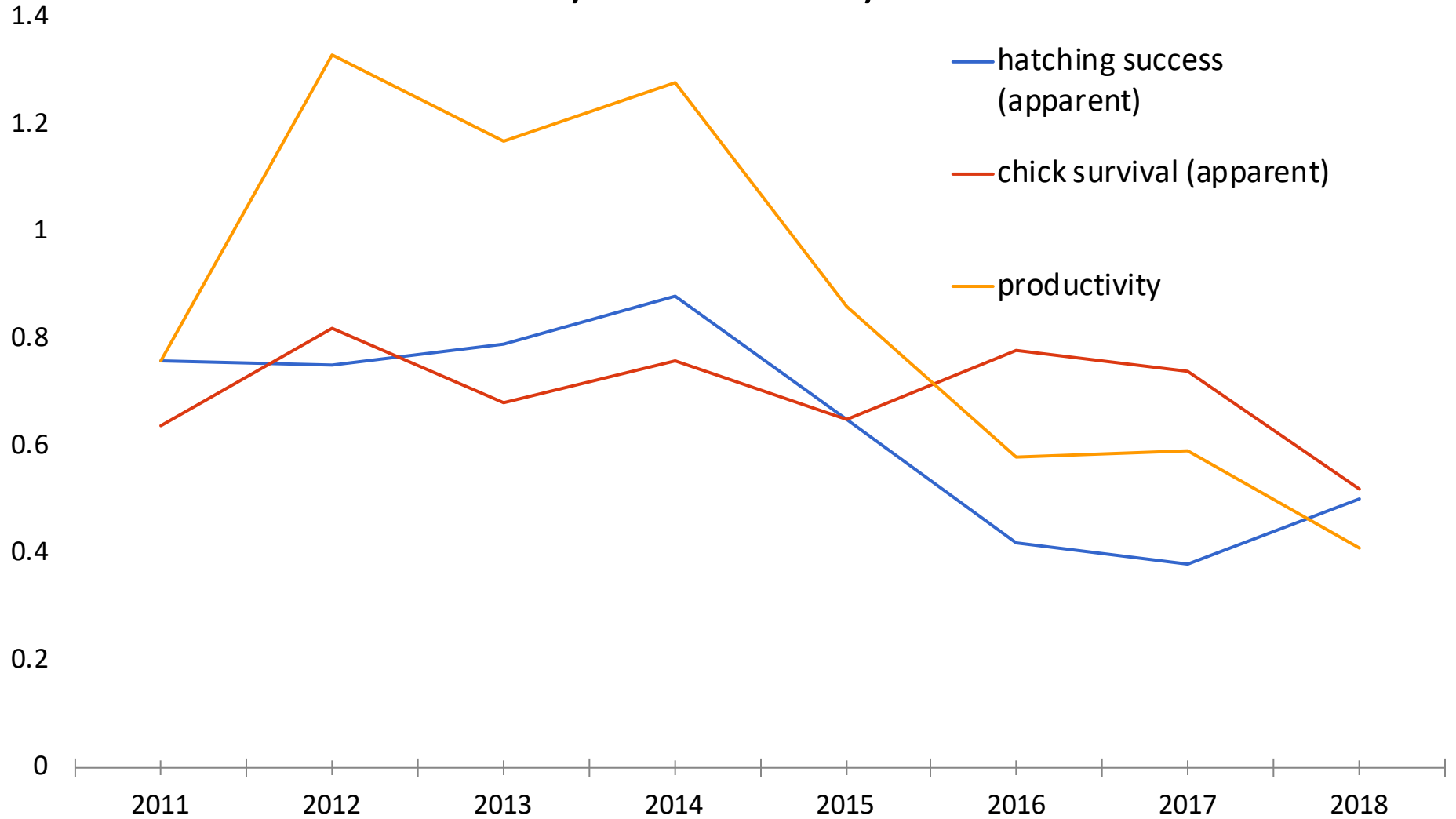
	2011	2012	2013	2014	2015	2016	2017	2018	2018*
territorial pairs	27	24	29	33	44	34	33	33	
breeding pairs	21	24	24	32	43	31	29	32	33
broods hatched	16	18	19	28	28	13	11	16	31
broods fledged	12	15	17	25	23	9	9	9	
chicks hatched	25	39	41	54	57	23	23	25	
chicks fledged	16	32	28	41	37	18	17	13	
hatching success (apparent)	0.76	0.75	0.79	0.88	0.65	0.42	0.38	0.5	0.94
chick survival (apparent)	0.64	0.82	0.68	0.76	0.65	0.78	0.74	0.52	
productivity	0.76	1.33	1.17	1.28	0.86	0.58	0.59	0.41	1.48
total # eggs	32	51	53	40	92	56	53	70	
failed nests	11	6	10	5	16	21	22	17	
failed broods	4	3	2	3	5	4	2	7	
nests with partial clutch loss	3	2	9	8	9	0	2	4	

* Data from NYC Parks obtained in Arverne, 4 miles E of BP

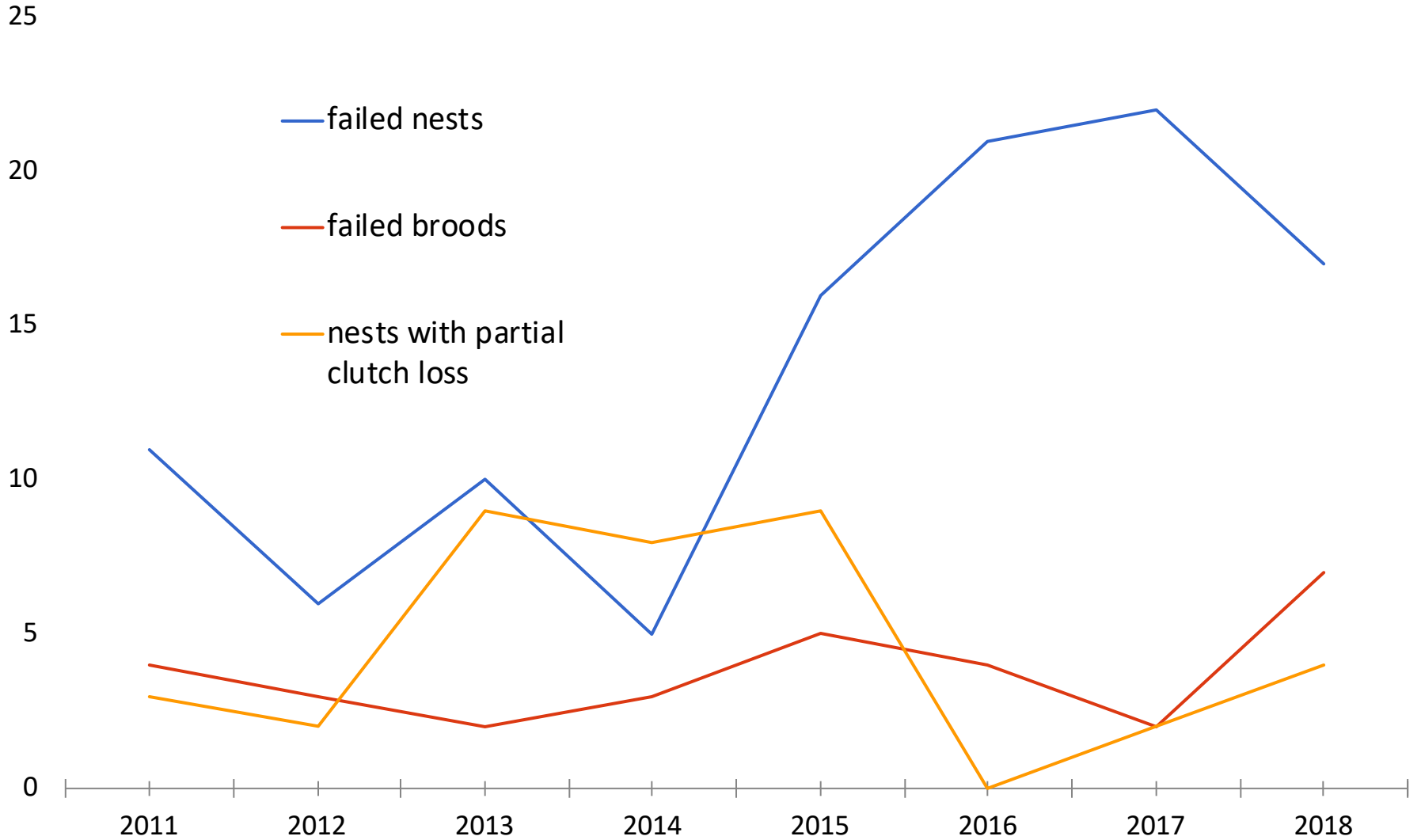
AMOY Productivity New York City



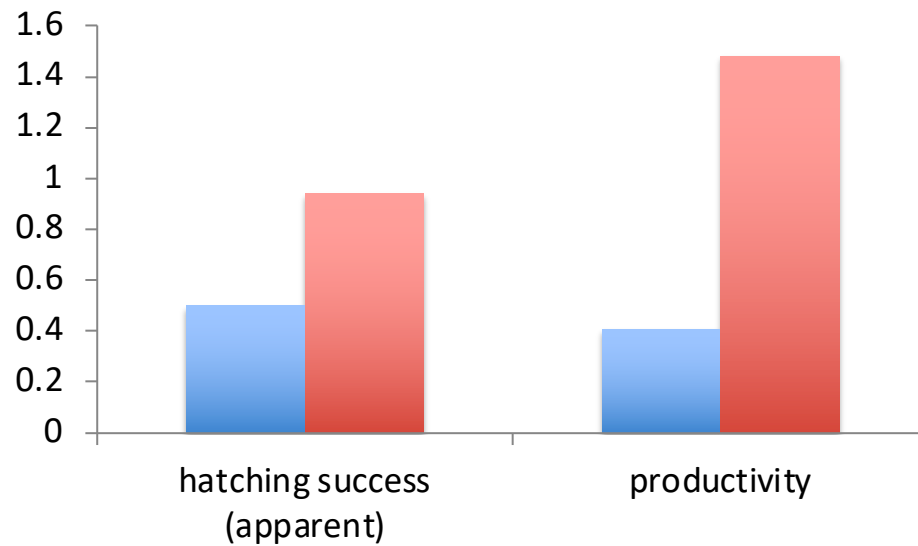
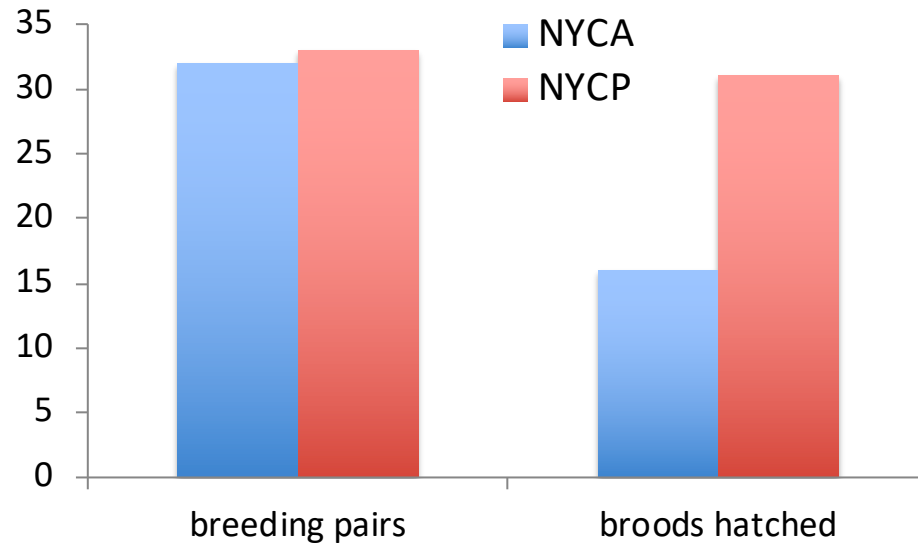
AMOY Productivity New York City



AMOY Productivity New York City



AMOY Productivity New York City 2018



Birds Banded by NYCA

Location	Breezy Point		Arverne		Nickerson Beach		total
	adult	chick	adult	chick	adult	chick	
2012	0	0	5	0	0	0	5
2013	4	0	0	0	0	0	4
2014	8	4	8	0	0	0	20
2015	2	4	2	3	0	5	16
2016	0	3	0	5	0	0	8
2017	0	7	2	12	0	14	35
2018	4	10	5	11	0	?	30
total	18	28	22	31	0	19	118

Acknowledgments

This report is part of the project Regional Conservation of Oystercatchers and Piping Plovers in Gateway Recreation Area, with the National Park Service permit GATE-2011-SCI-0018, and NPS study number GATE-290.

Thanks to: Susan Elbin, Shiloh Schulte, Dana Filippini, Emily Liebert, Kaitlyn Parkins, all the volunteers.

