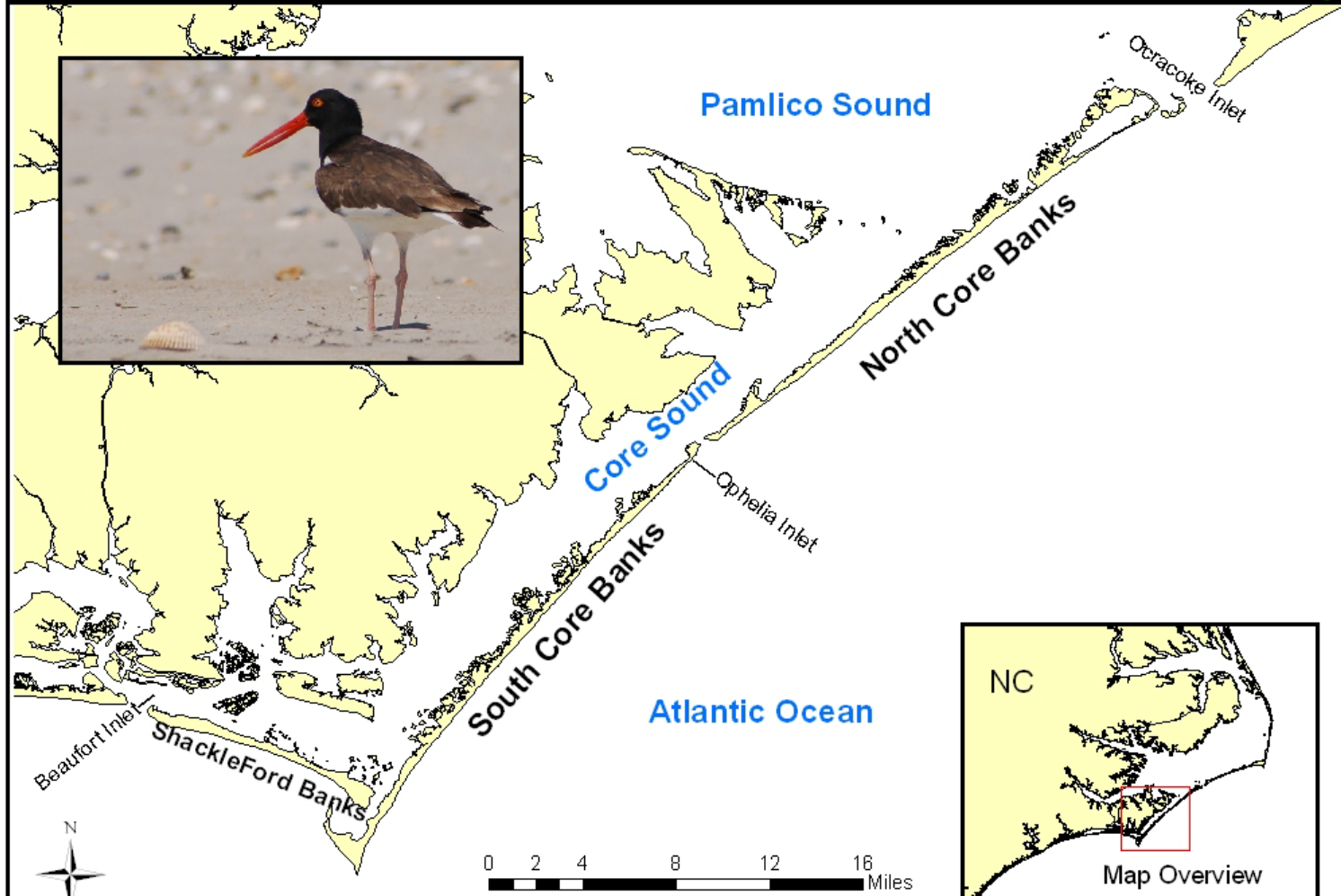




American Oystercatcher 2009

Cape Lookout National Seashore



American Oystercatcher Nesting by Island 2009

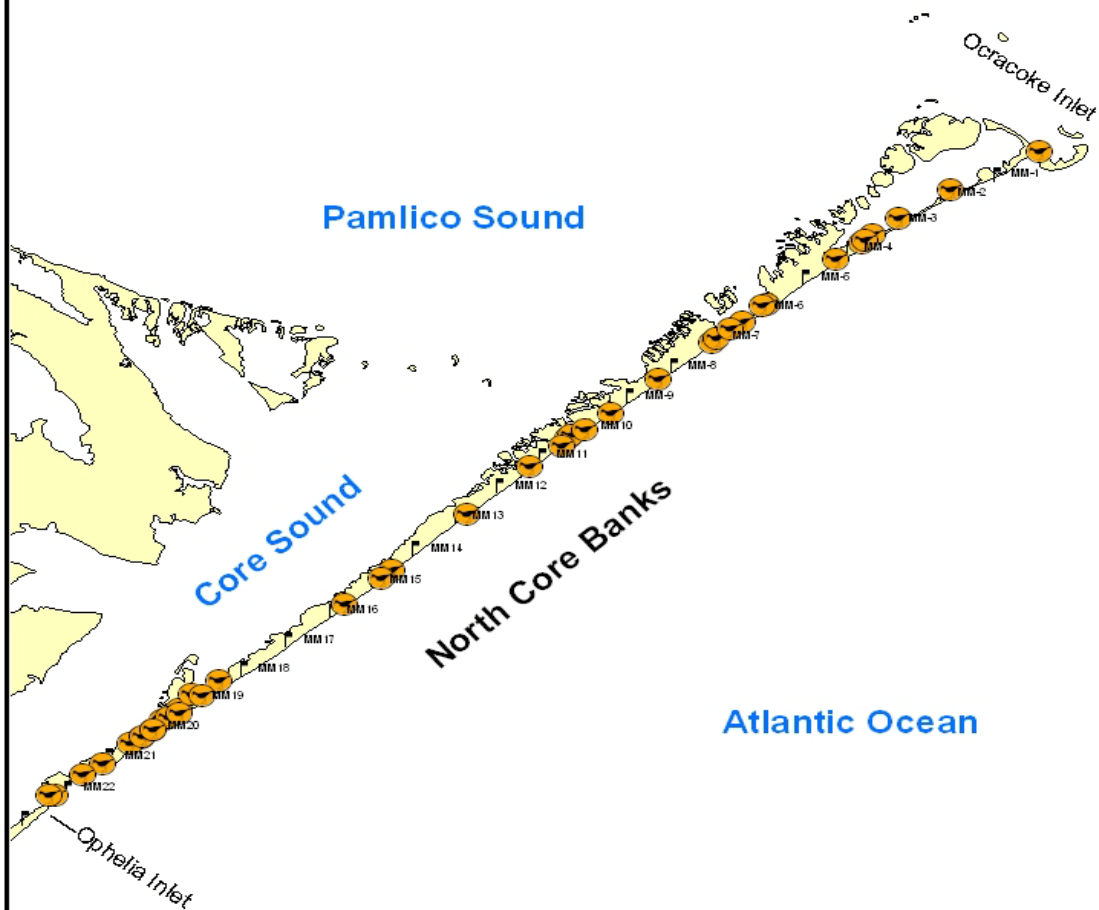
Island	# pairs	#Nests	# Nests Hatched	# Chicks Fledged
North Core Banks	29	40	7 (18%)	8
South Core Banks	22	30	11 (37%)	11
Shackleford Banks	10	13	2 (15%)	2
CALO Total	61	83	20 (24%)	21

Summary of Seashore American Oystercatcher Reproductive Success Data, 1995-2009

Year	Island	#Nests	#Nests Hatched	# Pairs (nesting)	#Chicks fledged
1995	South Core Banks	36	10 (28%)	--	7
1997	South Core Banks	34	4 (12%)	--	2
1998	North & South Core Banks	98	12 (12%)	--	6
1999	North & South Core Banks	114	16 (14%)	--	6
2000	North & South Core Banks	75	25 (33%)	51	9 (0.18)
2001	North & South Core Banks	109	19 (17%)	51	1 (0.02)
2002	North & South Core Banks	90	10 (11%)	45	6 (0.13)
2003	Cape Lookout N.S.	106	17 (16%)	47	8 (0.17)
2004	Cape Lookout N.S.	68	37 (54%)	53	45 (0.85)
2005	Cape Lookout N.S.	65	26 (40%)	53	18 (0.33)
2006	Cape Lookout N.S.	69	23 (33%)	53	25 (0.47)
2007	Cape Lookout N.S.	99	21(21%)	61	31 (0.51)
2008	Cape Lookout N.S.	91	17 (19%)	57	15 (0.26)
2009	Cape Lookout N.S.	83	20(24%)	61	21 (0.34)

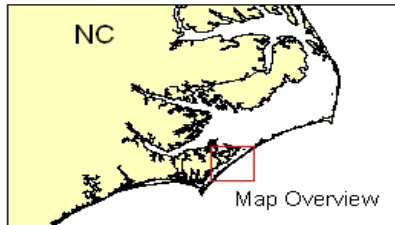
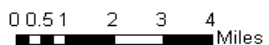


North Core Banks American Oystercatcher Nests 2009



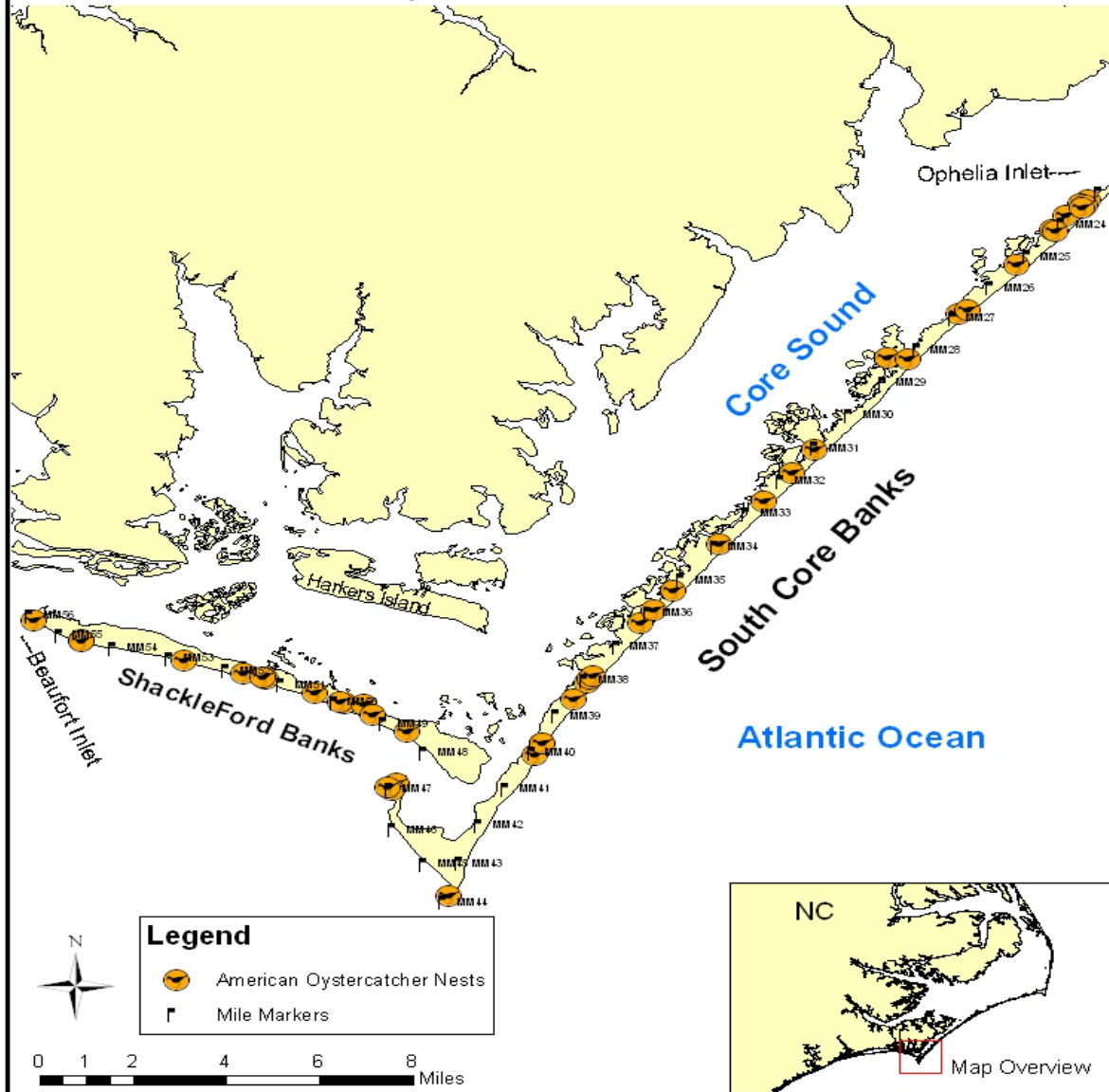
Legend

- American Oystercatcher Nests
- Mile Markers





South Core Banks and Shackleford Banks American Oystercatcher Nests 2009



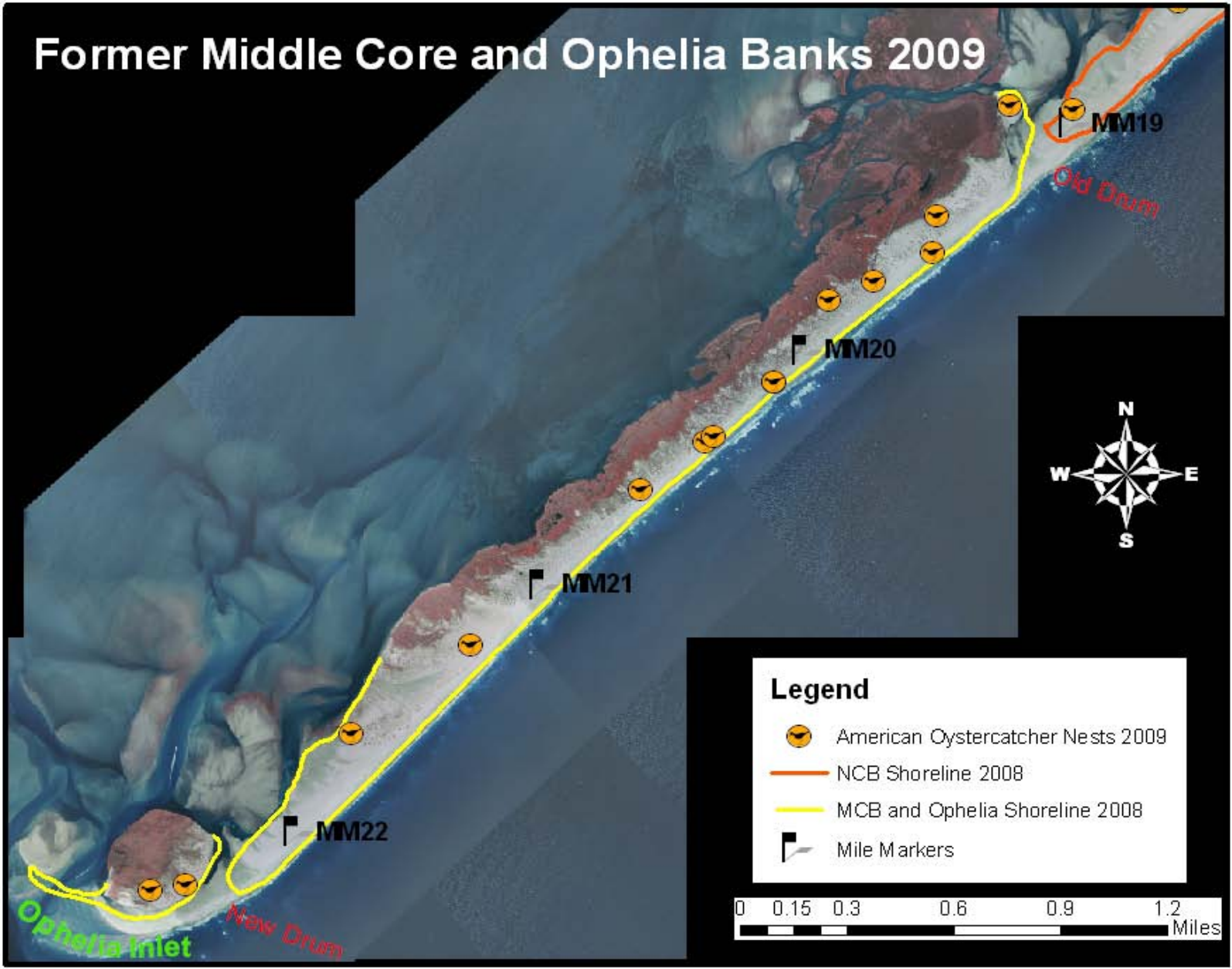
Old Drum Inlet 1999-2009



New Drum Inlet 1971-2009

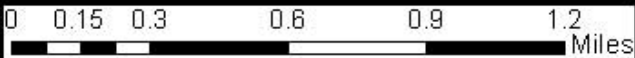


Former Middle Core and Ophelia Banks 2009



Legend

- American Oystercatcher Nests 2009
- NCB Shoreline 2008
- MCB and Ophelia Shoreline 2008
- Mile Markers



Summary of former Middle Core Banks and Ophelia Island, Mile 19 to Mile 22.5, Oystercatcher Reproductive Success Data from 2004 to 2009.

Year	Island	#Nests	#Nests Hatched	# Pairs (nesting)	#Chicks fledged
2004	MCB	5	4 (80%)	5	7 (1.40)
2005	MCB	8	5 (62%)	7	9 (1.28)
2006	MCB and OI	10	8 (80%)	10	10 (1.00)
2007	MCB and OI	14	9 (64%)	13	13 (1.00)
2008	MCB and OI	8	5 (62%)	8	7 (0.88)
2009	MCB and OI	13	3 (23%)	10	1 (0.10)

THROUGH VEHICLE



TRAFFIC ONLY - next 600 feet

Entering Protected Species Area



No Parking



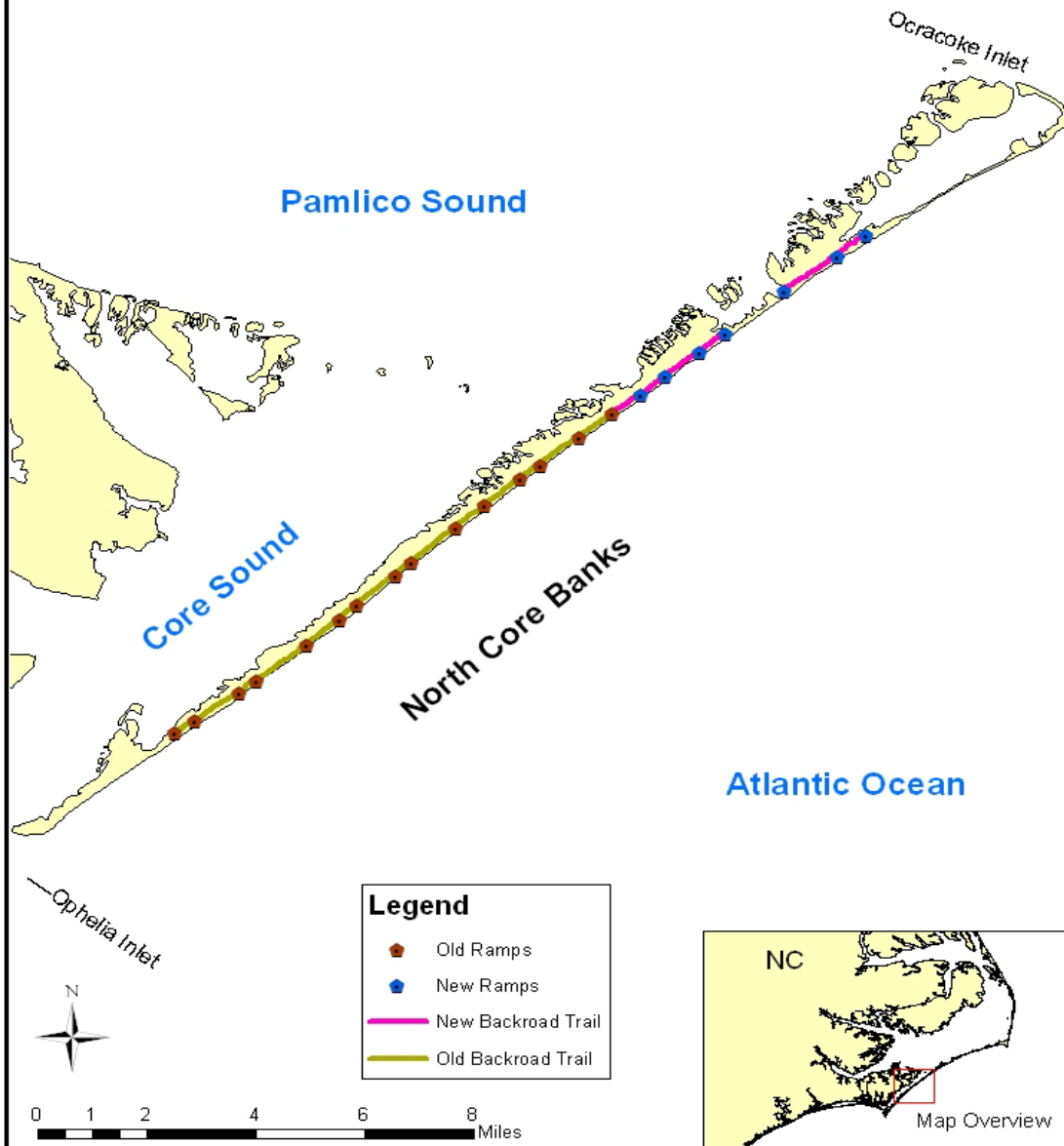
No Camping



No Pedestrians



North Core Banks Backroad System 2009



Winter Roosting Flock Surveys

